

A safe environment begins with Garrett.

A safe environment begins with Garrett.

GARRETT[®]
METAL DETECTORS





A legacy of safety.

Since being asked to provide walk-through and hand-held metal detectors for the 1984 Los Angeles Olympics Games, Garrett has furnished security checkpoint screening products for countless special events. This includes many other Olympic Games, World Cup events, the Pan-American Games, professional sports contests, college stadiums, and more.

Garrett also offers security solutions for many types of public domains: schools and universities, airports, mass transit terminals, courthouses, government buildings, prisons, corporate security, hospitals, national landmarks, and entertainment events.

Providing security solutions since 1984.



Walk-Through Metal Detectors



Garrett products are trusted worldwide.

Garrett walk-through metal detectors were successful in moving thousands of fans into the stadiums during the 2014 World Cup.



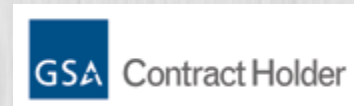
Garrett PD 6500i™ Walk-Through Metal Detector

Meets the world's highest test certifications

Garrett's *PD 6500i* is an industry leader with superior pinpoint technology and unmatched discrimination features. This detector has proven its effectiveness at moving high volumes of patrons through professional sporting venues and major international competitions, such as the Olympic Games, World Cup events, and the Pan-American Games. The *PD 6500i* has also been trusted to safeguard international airports, hotels, government buildings, and correctional facilities. With its advanced networking and ability to pinpoint targets in 33 detection zones, the *PD 6500i* is the walk-through of choice for security professionals worldwide.



PD 6500i is an "Approved Product for Homeland Security" under the SAFETY Act.



Standard Programs	More than 20 application programs included
Sensitivity	200 distinct sensitivity levels
Meets IP55 Standards	For moisture, foreign matter protection
Overhead Control Unit	All electronics—LCD, alarm light, LED bar graph, control touch pads—integrated to eliminate wire exposure.
Tamper-Proof Settings	Three access levels of security clearance
Self Diagnostic Program	Complete and automatic
Zone Sensitivity Boost	Adjustable in six areas
Optional Battery Packs	10-hour or 30-hour backup options available
Warranty	24 months, Limited Parts/Labor

For maximum performance: pinpoint the threat with Garrett's 33-zone *PD 6500i*

For Garrett Walk-Through Specifications, see page 25.

Multi-brand compatibility

Can be added to existing checkpoints without having to replace other brand units. Includes multiple channels and 2,300 selectable operating frequencies.

Optimum Performance

More than 20 standard program settings scientifically engineered to address the needs of airports, courthouses, prisons, schools, facilities, special events, mass transit, loss prevention, and other applications.

Pacing lights

Universal "wait" and "proceed" symbols at the detector entrance for traffic controls.

Advanced networking (optional)

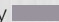
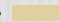
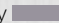
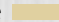

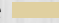
Manage walkthroughs individually or as groups and perform statistical analysis via network with CMA interface module. Supervisors can remotely access controls, visual alarms and statistics.

Directional counter

Four settings for counting patrons: forward only, reverse only, subtract in reverse, and bidirectional.

PD 6500i™

Walk-Through Metal Detector

U.S.A. / International	Description	Color
1168414 / 1168424*	PD 6500i 30" (as shown)	Gray 
1168411 / 1168421*	PD 6500i 30"	Beige 
1168416 / 1168426*	PD 6500i EZL†	Gray 
1168412 / 1168422*	PD 6500i EZL†	Beige 
1168432 / 1168427*	PD 6500i 32.5"***	Gray 
1168433 / 1168429*	PD 6500i 32.5"***	Beige 

Other options (such as IP 65 models) also available.

* Supplied with Euro plug.

† EZL—Standard 30" clearance with zone lights on both the entry and exit sides, allowing the operator to view the alarmed object from any position.

** 32" ADA-compliant passageway



★ **Advanced broadband technology**

Analyzes targets across a broad range of frequencies for greater accuracy. Provides superior ferrous and non-ferrous detection. Improved discrimination means fewer false alarms and higher throughput.

★ **More accurate pinpointing**

With more than four times the detection coils of competitive models, the PD 6500i provides uniform detection and precise pinpointing. Independent zone indicator lights on both side panels identify not only height but also left, center and right locations for one or more objects passing through the archway.



★ **Dual-sided detection**

This unique bilateral technology has transmitters and receivers in each side panel to allow scanning from both sides, resulting in uniform detection throughout the archway. It also provides superior noise cancellation resulting in easier setup (i.e. no need to rotate the unit to avoid interference from nearby equipment such as other metal detectors or x-ray machines).

Superior versatility

Menu based settings for feature selection such as alarm indication, count method, and language without the use of a computer. Field programmable to allow system upgrades. Multiple units can be installed as close as 2 inches.

International security standards

PD 6500i meets the world's highest test certifications, including the following international airports:



Sports and Special Events



Sophisticated threat detection for high volume events

MT 5500™, CS 5000™ and MS 3500™

Solid Security Solutions

Garrett offers several other walk-through metal detectors for security checkpoint station use. The *MT 5500* provides maximum patron throughput and indicates whether detected targets are on the left, right or center of its archway. The *CS 5000* is one of the industry's most economical and effective walk-through metal detectors, offering greater sensitivity for detecting weapons from the archway to the floor. The *MS 3500* is designed to withstand all types of weather conditions. Its heavy-duty armored aluminum plates provide durability for rough environments such as prisons and outdoor checkpoints.

MT 5500 control panel
Tamper proof settings through computerized access codes.

Three levels of audio and visual detection
Dual alarm LED lights, audible alarms and target area location indication.

Multi-dimensional scanning
indicates whether a metal target is located on the left, right or center of the archway.

The Garrett *MT 5500* walk-through offers maximum throughput with exceptional scanning technology.



MT 5500™

Walk-Through Metal Detector
US / INTERNATIONAL
PN 1167700 / 1167720**



**Includes Euro plug.





CS 5000 Control Panel:
Top LED display indicates detection density based on amount and composition of metallic objects passing through the unit. Red Alarm Light appears when target is detected.

Excellent sensitivity, stability and noise rejection

Cost effective solid security
Uniform coverage from archway to floor for high-volume security checkpoint stations

CS 5000™
Walk-Through Metal Detector

US / INTERNATIONAL
PN 1167410 / 1167420**



**Includes Euro plug.



Enjoy a safe environment at public events

MT 5500 and CS 5000 Additional Features

Standard Programs	20 application programs included
Sensitivity	Up to 200 distinct sensitivity levels
Traffic Counter	LCD display
Uniform Detection Field	Floor-to-archway uniform coverage
Overhead Control Unit	All electronics—LCD, alarm light, LED bar graph, control touchpads—integrated to eliminate wire exposure.
Tamper-Proof Settings	Via computerized access codes
Self Diagnostic Program	Complete and automatic
Ankle Boost Sensitivity	Three levels
Easy Portability	Lightweight yet rugged design
Easy Assembly	Only four (4) pieces and eight (8) screws. Simple-to-follow instructions.
Optional Battery Pack	Provides up to 20 hours backup
Warranty	24 months, Limited Parts/Labor

For Garrett Walk-Through Specifications, see page 25.



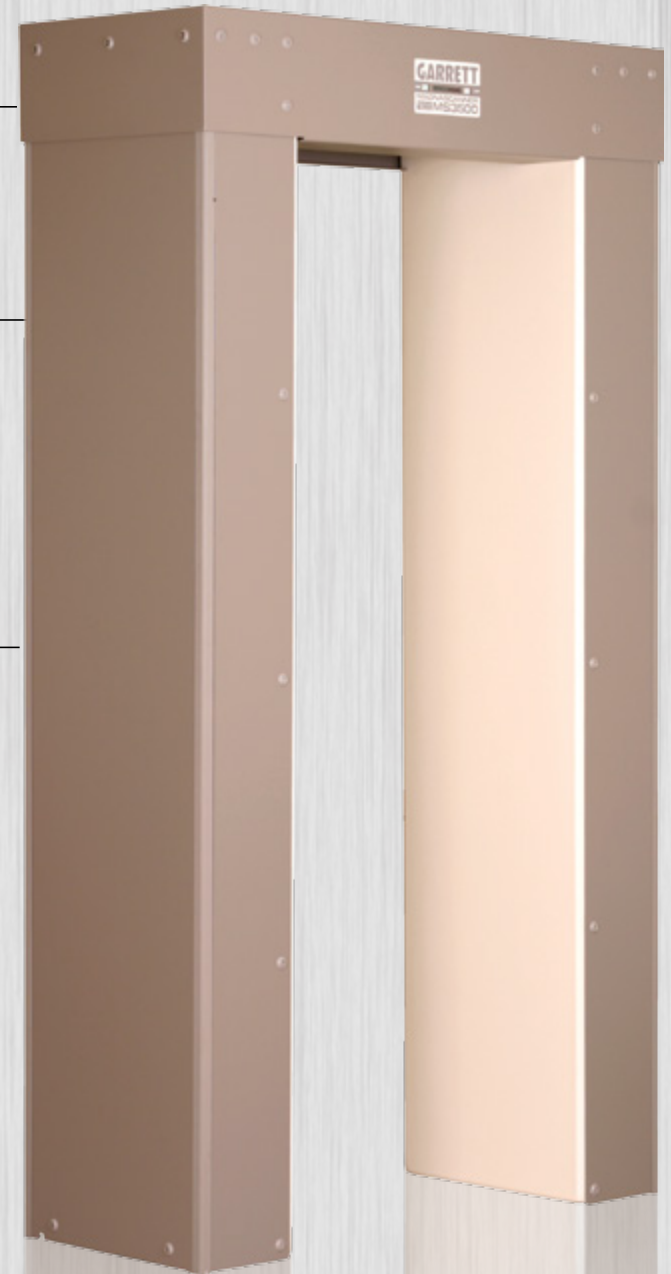
Rough environments are ideal for the reinforced *MS 3500*

Standard Programs	20 application programs included
Sensitivity	Up to 200 distinct sensitivity levels
Traffic Counter	LCD display
Uniform Detection Field	Floor-to-archway uniform coverage
Overhead Control Unit	All electronics—LCD, alarm light, LED bar graph, control touchpads—integrated to eliminate wire exposure.
Tamper-Proof Settings	Via computerized access codes
Self Diagnostic Program	Complete and automatic
Ankle Boost Sensitivity	Three levels
Moveable Display Keypad	Can be located inside the locked and weatherproof overhead cap assembly.
Durable Construction	Maximum protection against abuse; quick assembly design. Optional battery pack provides up to 20 hours backup.
Warranty	24 months, Limited Parts/Labor

Designed for use in maximum security settings
 Stands up to the rugged demands of jails, prisons

Weatherproof design
 Designed with environmentally-durable materials to meet the needs of prisons and outdoor checkpoints. Weatherproof overhead cap assembly houses all electronics to prevent moisture penetration.

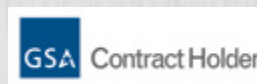
Heavy-duty 3/32" armor construction
 Corner edge protectors and armored aluminum plates for maximum protection against physical abuse.



MS 3500™

Walk-Through Metal Detector

PN 1167200 US



For Garrett Walk-Through Specifications, see page 25

Hand-Held Metal Detectors





Super Scanner® V,
SuperWand®, and THD™

Hand-Held Metal Detectors

Hand-held metal detectors are used either as a primary scanning tool or in secondary screening to pinpoint targets detected by a walk-through metal detector. Garrett offers hand-held detectors designed for use in a wide variety of screening applications: public transportation, special events, airports, corporate security, courts, prison, loss prevention, and more.



Garrett hand-held detectors keep your visitors safe.

Super Scanner® V

Hand-Held Metal Detector

PN: 1165190

No tools required to change standard 9V battery (included).
Optional rechargeable battery kit available. See page 21.



Ultimate sensitivity
Detects medium sized pistol from 9" distance; large knife from 6"; razor blades and box cutters from 3" distance; foil-wrapped drugs and tiny jewelry from 1".

Self-calibrating
Digital microprocessor technology eliminates the need for periodic sensitivity adjustments.

Weatherproof rubber handle

Sharp audible alarm and bright red LED indicates the detection of metal.

Momentary push button

helps temporarily eliminate detection of nearby ambient metal such as rebar and metal walls.

Large 8" (20.3 cm) scan surface for quick, thorough scanning.

Rugged, high-impact ABS case with reinforced coil compartment. Exceeds Mil-Std-810F (drop test) Method 516.5, procedures II and IV.

Improved Features

Super Scanner V includes choice of clear audible or silent search/vibrate alarm options, plus extended battery life. Detects ferrous, non-ferrous and stainless steel weapons, contraband, and other metallic objects.

Three-color LED indication	Green LED = ON Amber LED = LOW BATTERY Red LED = ALARM
Operating Temperatures	-35° F (-37° C) to 158° F (70° C)
Width	3.25" (8.3 cm)
Thickness	1.625" (4.1 cm)
Length	16.5" (42 cm)
Total Weight	17.6 oz (500 g)
U.S. Trademarks	1,754,933 and 3,236,345
Battery Requirements	one 9V (included)
Warranty	2 Year, Limited Parts/Labor

GSA Contract Holder



Look for the mark of Garrett quality

SuperWand®

Hand-Held Metal Detector

PN: 1165800

No tools required to change standard 9V battery (included).
Optional rechargeable battery kit available. See page 21.



Dual alarm mode

Select clear audible or silent search/vibrate alarm modes. Power switch and LEDs positioned for easy access and high visibility.

Ergonomically designed grip

Fits comfortably in virtually any size hand.

One-touch button operation

3-way switch (On, Off, Silent)

Elongated 8.75" (22.2 cm)

scan surface
for easy scanning from head to foot.

Pinpointing Tip



360° Detection field

provides uniform sensitivity and tip pinpointing to detect weapons and other metal objects with extreme accuracy.

Optimum sensitivity

Detects ferrous, non-ferrous and stainless steel weapons, contraband and other metallic objects.

Rugged, high-impact construction

with structurally isolated coil for added impact absorption. Exceeds Mil-Std-810F (drop test) Method 516.5, procedures II and IV.

The Garrett SuperWand is self-calibrating.

Digital microprocessor technology eliminates the need for periodic adjustments.

GSA Contract Holder



Look for "Made in USA" on SuperWand labeling

Three-color LED indication	Green LED = ON Amber LED = LOW BATTERY Red LED = ALARM
Operating Temperatures	-35° F (-37° C) to 158° F (70° C)
Width	3.25" (8.3 cm)
Thickness	1.25" (3.2 cm)
Length	19" (48.3 cm)
Total Weight	18.6 oz (.53 kg)
U.S. Patent No.	D459,246 S
Battery Requirements	one 9V (included)
Warranty	2 Year, Limited Parts/Labor

Ballistic weave holster included. Mounts easily on belt or in car. No tools required to change standard 9V battery (included). Optional rechargeable battery kit available. See page 21.

Vibrating alarm and bright red LED indicates the detection of metal.

Ultra sensitive response to all ferrous, non-ferrous and stainless steel weapons, contraband and other metallic objects.

Bright LED flashlight for low light and night operations. Useful for scanning IDs and for searching pockets, handbags.



Easy ON/OFF battery cover.

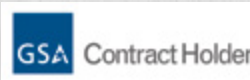
Rugged, high-impact case with weatherproof rubber grip. Exceeds Mil-Std 810F (drop test) Method 516.5, procedure II.

Water resistant construction. Meets IEC 529 IP66 standards.

360° Detection field

Powerful 4-inch detection length. Silent vibrating alarm with red LED alarm indicator.

Ballistic Weave Holster



Look for "Made in USA" on the THD's endcap label.



Three-color LED indication	Green LED = ON Amber LED = LOW BATTERY Red LED = ALARM
Operating Temperatures	-35° F (-37° C) to 158° F (70° C)
Width	3.25" (8.3 cm)
Thickness	1.625" (4.1 cm) tapered to 1.125" (2.9 cm)
Length	8.43" (22 cm)
Total Weight	6.4 oz (.2 kg)
U.S. Patent No.	D497,559 S
Battery Requirements	one 9V (included)
Warranty	2 Year, Limited Parts/Labor

Evidence Recovery Metal Detectors



Crime Scene Investigation



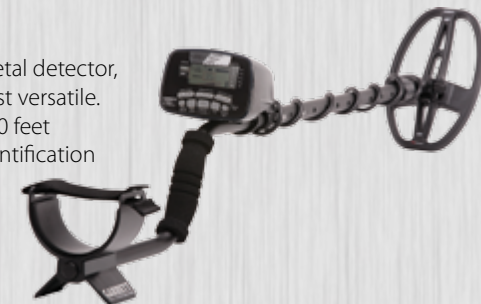
Garrett has an evidence recovery detector to handle almost any challenge.

CSI Pro™, CSI 250™, Sea Hunter Mark II™
and CSI Pro-Pointer®

Evidence Recovery Solutions

Garrett has worked closely with law enforcement personnel for decades to create solutions to their challenges.

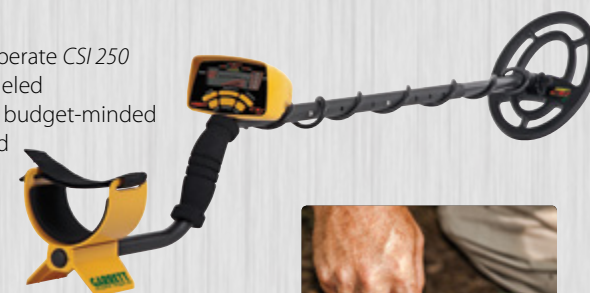
Our latest crime scene metal detector, the *CSI Pro*, is also our most versatile. It is fully submersible to 10 feet and has exclusive iron identification features for iron-infested urban recovery areas.



For recovery operations in deeper water, the *Sea Hunter Mark II* can be submerged to 200 feet.



The simple-to-operate *CSI 250* features unparalleled performance for budget-minded departments and agencies.



Garrett's pinpointer, the *CSI Pro-Pointer*, is an essential tool for speedy search and recovery.



CSI Pro™

All Terrain Metal Detector

PN: 1140750 (detector only) or PN 1140780 (Recovery Kit)



The CSI Pro's standard 5" x 8" DD-configuration searchcoil is ideal for searching through iron-infested sites or in areas where larger size coils could not be easily maneuvered.



The CSI Pro can be fully submerged to 10 feet.

(Shown with optional underwater headphones.)

OPTIONAL CSI PRO RECOVERY KIT (PN 1140780) INCLUDES TWO EXTRA ACCESSORIES



CSI Pro-Pointer®

Includes woven belt holster. More info on page 20.



Tactical Soft Case, black color

Padded travel/storage bag, 50" length with full zipper opening, carrying handle and backpack straps. Holds CSI Pro detector without removing the searchcoil. Includes reinforced handle and five Velcro pouches to hold spare searchcoils, CSI Pro-Pointer, evidence recovery tools, etc.

Accessory items subject to change.

Target ID Cursor Segments	20
Iron Discrimination Segments	40
Notch Discrimination	Adjustable
Search Modes	2 (ZERO, CUSTOM)
Sensitivity/Depth Adjustments	8
Electronic Pinpointing	YES
Frequency	15 kHz, user adjustable
Audio Tone ID Levels	3
Standard Searchcoil	5" x 8" DD PROformance™
Length (Adjustable)	43" to 56" (1.09m - 1.4m)
Total Weight	2.8 lbs. (1.27 kgs.)
Batteries	4 AA (included)
Battery Condition Indicator	YES
Warranty	2 Year, Limited Parts/Labor

Note: Deluxe Headphones are included with both PN 1140750 (detector only) and PN 1140780 (CSI Pro Recovery Kit).



Deluxe Headphones Included!

With padded ear cups and dual volume controls.

Fully waterproof headphones also available. See page 21.

All terrain versatility

weatherproof housing designed for dusty, humid or wet environments. Unit is fully **WATERPROOF TO 10 FEET** (3 meters).

High-Res Iron Discrimination™

Allows user to set iron discrimination to one of 40 levels for precise ability to separate good targets from trash.

Pro Audio

Proportional audio and Tone Roll Audio features allow user to hear subtle changes in a target's response to better judge its conductivity, size, shape, depth.

Fast recovery speed

Allows greater ability to pick out desired targets amongst trash items.

Digital Target ID

0 to 99 Target ID scale offers increased ability to distinguish one target's conductivity from another.

Iron Audio™

Allows the user to hear discriminated iron and to alter the detector's mid-tone signal's range.

Continuous Depth Indicator

to determine target depth.

Graphic Target Analyzer™ (GTA)

Identifies target's conductivity.

15 kHz frequency

Improved detection of small targets, gold, brass, lead, etc.

Search Modes

(Discrimination Patterns)
2 plus electronic pinpointing

Battery Condition Indicator

shows battery life continually.



Ground Balance

Automatic and manually adjustable for improved performance.

CSI Pro field use tip: Use ZERO Mode to accept all potential targets or use CUSTOM Mode to create a user-specific search pattern.



Sea Hunter Mark II™

Metal Detector

PN: 1151970

GSA Contract Holder



Fully Waterproof to 200 feet
Find lost or hidden metal objects in underwater surf, beach, swamp or freshwater environments.

Circuit type:
Pulse Induction technology for automatic cancellation of salt ground mineralization.

Audio Threshold, Adjustable:
Adjust to user's preference.



SEA HUNTER MARK II ACCESSORIES INCLUDED

- Submersible headphones (as seen above)
- Hip mount belt pouch to reduce detector weight for long searches

Discrimination Modes:

Two operating modes (Standard or Discrete) offer varying levels of non-ferrous target discrimination.

Discrete Trash Elimination: Use to eliminate most pull tabs and foil without significantly degrading sensitivity for rings and coins.

Standard Trash Elimination: Provides the deepest possible detection; allows a very slow searchcoil sweep in areas with little trash.



Pulse Induction Performance

Designed to ignore salt water and mineralized soils, the *Sea Hunter* will find all metal types, including brass, lead, cartridges and foil.

User-adjustable Elimination control
Independently sealed battery compartment

Multiple Frequency Technology	22 frequencies
Circuit Type	Pulse Induction
Discrimination	Full Range (PI)
Search Modes	3
Detection Frequency	750 pulses per second, adjustable
Submersion Depth	200 feet (65m); (underwater headphones required)
Standard Searchcoil	8" PROformance mono searchcoil
Submersible Headphones	Included
Length (Adjustable)	28" to 52" (.71m - 1.32m)
Total Weight	5.1 lbs. (2.3 kgs.) stem-mounted
Control Housing	31 oz. (.88 kgs.)
Detector Buoyancy	Near neutral
Batteries	8 AA (included)
Warranty	1 Year, Limited Parts/Labor

Easy operation, low cost with solid performance

Budget-friendly price for high-end detector features such as Graphic Target ID.

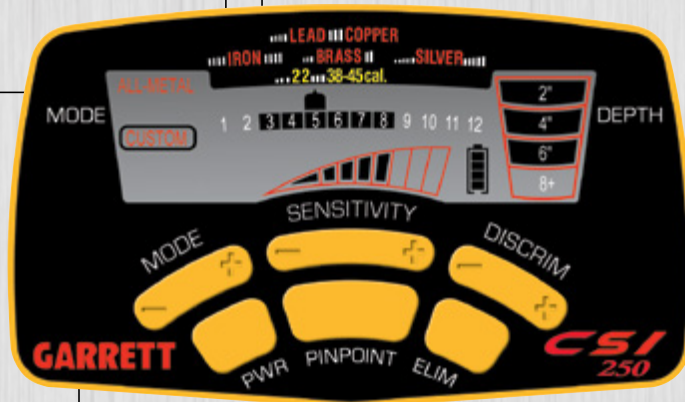


Target ID Legend

Common crime scene targets (bullets, brass, silver, iron) are indicated with cursor and printed LCD legend.

Notch Discrimination

Modify discrimination patterns to search for specific items while ignoring others.



Electronic pinpointing

To precisely locate targets and speed their recovery.

Continuous depth indicator

Determines target depth.

Target ID Cursor Segments	12
Iron Discrimination Segments	2
Notch Discrimination	Adjustable
Search Modes	2 (plus Pinpoint)
Sensitivity/Depth Adjustments	8
Electronic Pinpointing	YES
Frequency	6.5 kHz
Audio Tone ID Levels	3
Standard Searchcoil	6.5" x 9" <i>PROformance™</i>
Length (Adjustable)	42" to 51" (1.06m - 1.29m)
Total Weight	2.7 lbs. (1.2 kgs.)
Batteries	4 AA (included)
Warranty	2 Year, Limited Parts/Labor

CSI 250 ACCESSORIES INCLUDED

Deluxe Headphones (land-use) and CSI Carry Bag



Deluxe Headphones



CSI Carry Bag



CSI Pro-Pointer®

Hand-Held Metal Detector

PN: 1166020

No tools required to change standard 9V battery (included).
Optional rechargeable battery kit available. See page 21.

Pinpointing tip and 360° side-scanning capability
Scan with side of detector to quickly cover an area, then precisely pinpoint with the tip.

Find evidence faster

Static detection (no motion required) speeds target recovery.

LED flashlight

Assists in low light recoveries.

Exclusive scraping blade

Easily sift through soil for evidence during target recovery.



Automatic tuning

Microprocessor circuitry ensures maximum sensitivity with no tuning required.

Proportional audible and vibrating alarms

increase in intensity based on target's proximity to quickly pinpoint weapons, shell casings, crime scene evidence.

Water resistant

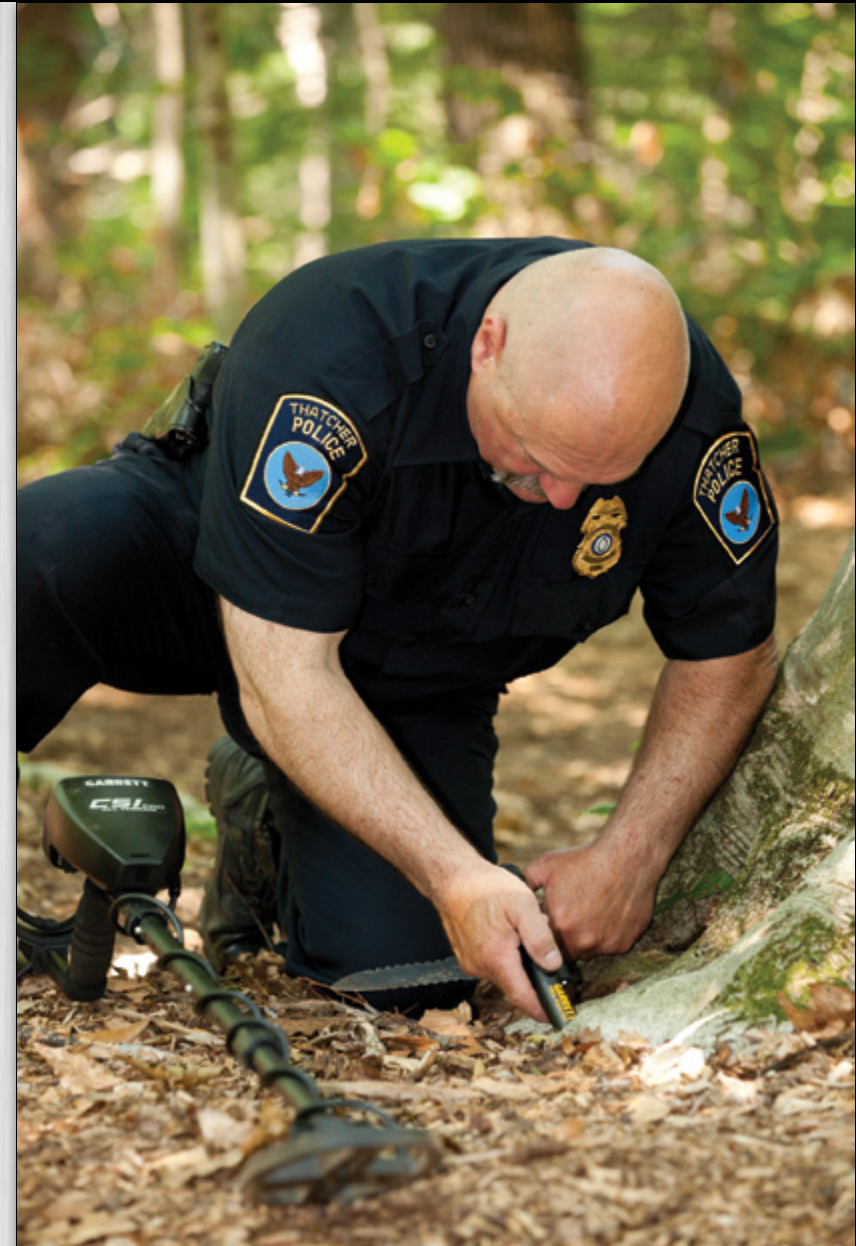
Meets IP 66 standards. Can be washed in running water or used in the rain.

Utility uses

Search walls and tight spaces for hidden items. Find metal pipes in walls or nails in drywall to locate studs. Check wood for nails before cutting with expensive tools.

CSI Pro-Pointer

Includes woven belt holster—secures Pro-Pointer to standard size belts.



Operating temperatures:	-35°F (-37°C) to 158°F (70°C)
Meets IEC 60529 IP 66 standards for water and dust protection	
Controls:	Power switch
Length:	9" (22.9 cm)
Thickness:	1.5" (3.8 cm) tapered to .875" (2.2 cm)
Weight:	7 oz. (0.2 kg) with battery
Single 9V battery:	Included



Hand-Held and Walk-Through Metal Detector Accessories

Super Scanner® Accessories



Rechargeable Battery Kit
100-240V Part No. 1610200 (shown)
Allows recharging without removing the battery. Includes environmentally friendly Cadmium free Ni-MH battery and charger. Supplied with US/EURO/UK/AUS plug kit.



Earphone
Part No. 1600100



Leather Belt Loop Harness
Part No. 1600800



Belt Holder
Part No. 1611600
Made of durable ballistic weave material. Can be worn on a belt or can be mounted in a car.

SuperWand® and THD™ Accessories



Rechargeable Battery Kit
110V Part No. 1612000
220V Part No. 1612100
Includes two (2) environmentally friendly Cadmium-free Ni-MH batteries and charger.

Note: This kit can also be used with the *Super Scanner* for charging its rechargeable battery externally.



Belt Holster
Part No. 1620300
Made with durable ballistic weave material and can be belt mounted.
For SuperWand use.

Walk-Through Metal Detector Accessories

Battery Backup Modules

Conveniently allows multiple hours of backup use. Hinged door protects all interior wiring and components.

PD 6500i Battery Backup: Up to ten (10) hours backup. Charger included.
Part No. 2225400

PD 6500i Battery Backup, Fast Charge
Part No. 2225410

PD 6500i Extended Battery Backup:
Up to thirty (30) hours backup. Charger included.
30" width only.
Part No. 2234700

MT 5500: Up to twenty (20) hours backup.
Part No. 2225770

CS 5000 and MS 3500: Up to twenty (20) hours backup.
Part No. 2225700



Adhesive Floor Mount Kit
Part No. 1604100
4 included.
For use with the Garrett PD 6500i.



10 ft. Cord Jumper
Part No. 9431900
Allows multiple walk-through units, in close proximity, to be linked to the same power source.



Operational Test Piece (OTP)
Part No. 1600600
Designed to FAA 3-gun test requirements.
Can be used with all Garrett model detectors.



Flat Test Piece (FTP)
Part No. 1620570
Designed to represent a small knife.
For use with the Garrett PD 6500i.

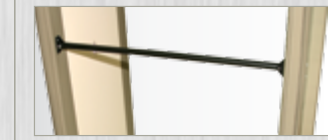


Removable MagnaDolly
Part No. 1168000
Removable wheel assembly for easy portability.

Designed for standard-size 30" walkthroughs.



Permanent MagnaDolly
Part No. 1169000
Permanently fastens to the PD 6500i, MT 5500 or CS 5000 for easy portability.



Permanent wheel assembly is also mounted on upper walk-through panel.



Includes foldable brace for walk-through support during moves.

Requires installation. Permanent MagnaDolly is best installed at Garrett factory at time of purchase.



Stabilizer Base
Part No. 1603900 (beige)
Part No. 1603901 (gray)
Can be used with PD 6500i, MT 5500 or CS 5000.



Floor Anchor Kit
Part No. 1604000
For use with the Garrett MS 3500.
Provides excellent stability for all operating conditions.

Network Access



CMA Interface Module™

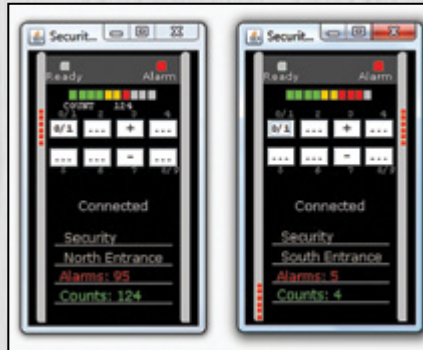
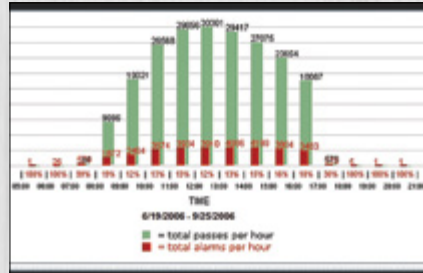
CMA (Control Monitor Analyzer) Interface Module

PN: 1168310

For use with Garrett PD 6500i, MT 5500 or CS 5000 models.

- Allows real time access to all walk-through detectors on your network from a remote location. For use with a 10/100baseT network and personal computer.
- Supervisors can remotely troubleshoot or change settings on detectors on their network.
- Analyze activities and statistics (alarms, throughput counts, etc.) for each walk-through metal detector in your network.
- With Garrett PD 6500i only: Utilize group management function to control settings and analyze data (alarms, patron counts and other diagnostic statistics) on multiple walk-through detectors at one time.

Analyze



Control and Monitor



Supervisors can remotely analyze and troubleshoot all walk-through detectors on their network with the CMA Interface Module.



DESKTOP REMOTE CONTROLS

Desktop Remote Control with Zone Indication

PN: 2266400

For use with Garrett PD 6500i.

For remote operation of the detector from up to 50 feet (standard). Contact Garrett for optional lengths.



Desktop Remote Control

PN: 2225600

For use with Garrett MT 5500, MS 3500 or CS 5000

For remote operation of the detector from up to 50 feet (standard). Contact Garrett for optional lengths.



NEW Remote Control

PN: 2234900

For use with Garrett PD 6500i.

Control the PD 6500i wirelessly with this compact device. Kit includes remote control and receiver module.



Searchcoils and Accessories: Ground Search Metal Detectors

CSI Pro™ Optional Searchcoils



9" x 12" PROformance™ concentric searchcoil
 PN: 2222700
 Waterproof; offers excellent depth for larger targets in less mineralized soils.



6.5" x 9" PROformance concentric searchcoil
 PN: 2222600
 Waterproof; offers excellent depth for medium-sized targets in less mineralized soils.



8.5" x 11" PROformance DD searchcoil
 PN: 2222400
 Larger size DD searchcoil offers maximum depth for larger targets in more mineralized soils, and offers excellent separation for adjacent targets.



4.5" (11.5cm) AT Super Sniper™ searchcoil
 PN: 2222500
 Waterproof; ideal for searching for small, shallow targets or in trashy or tight places.

Optional Headphones



Land-Use Headphones for *Sea Hunter*
 PN: 2202400
 Includes water-tight connector and dual volume controls for adjusting signal levels.



Submersible Headphones
 PN: 2202100
 Padded ear cups; for use with Garrett *CSI Pro* and *Sea Hunter Mark II*



1/4" Headphone Adapter
 PN: 1626000
 Allows land-use headphones with a 1/4" male jack to be used with the Garrett *CSI Pro* and *Sea Hunter* models. (Not intended for submersed use.)

CSI 250™ Optional Searchcoils



9" x 12" PROformance concentric searchcoil
 PN: 2221900
 Waterproof; offers excellent depth for larger targets in less mineralized soils.



4.5" ACE Super Sniper searchcoil
 PN: 2221800
 Waterproof; ideal for searching for small, shallow targets or in trashy or tight places.



8.5" x 11" PROformance DD searchcoil
 PN: 2222000
 Larger size DD searchcoil offers maximum depth for larger targets in more mineralized soils, and offers excellent separation for adjacent targets.



5" x 8" PROformance DD searchcoil
 PN: 2223000
 Smaller size DD searchcoil for use in more mineralized soils. Ideal for smaller, shallower targets or in trashy or tight places.

Sea Hunter Mark II™ Optional Searchcoil

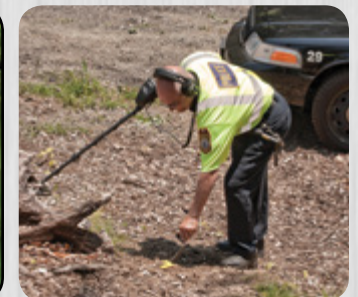


10" x 14" Mono
 PN: 2215300
 To be used for wider, deeper scanning.

Accessories



Stainless Steel Trowel
 PN: 1606100
 This 10" trowel has a ribbed, no-slip handle. A gauge on the inside blade measures in inches and centimeters.



You can prevent this!

Searchcoil used without a cover

Protect your investment with Garrett searchcoil covers.

Coil Covers



9" x 12" Coil cover PN: 1612600



6.5" x 9" Coil cover PN: 1605700



4.5" Coil cover PN: 1604200



8.5" x 11" DD Coil cover PN: 1606600



5" x 8" DD Coil cover PN: 1607400

Walk-Through Metal Detectors

Side by Side Comparison

Visit garrett.com to download detailed specification sheets on any Garrett security product



For maximum performance

PD 6500i™



MT 5500™



CS 5000™



MS 3500™

Passageway Interior Size	Width 30" (0.76 m) Height 80" (2.03 m) Depth 23" (0.58 m)	Width 30" (0.76 m) Height 80" (2.03 m) Depth 23" (0.58 m)	Width 30" (0.76 m) Height 80" (2.03 m) Depth 23" (0.58 m)	Width 30" (0.76 m) Height 80" (2.03 m) Depth 20" (0.51 m)
Overall Exterior Size	Width 35" (0.90 m) Height 87" (2.21 m) Depth 23" (0.58 m)	Width 35" (0.90 m) Height 87" (2.21 m) Depth 23" (0.58 m)	Width 35" (0.90 m) Height 87" (2.21 m) Depth 23" (0.58 m)	Width 50" (1.27 m) Height 89" (2.26 m) Depth 20" (0.51 m)
Shipping Size	Width 35.5" (0.90 m) Height 91.5" (2.32 m) Depth 6.25" (.16 m)	Width 35.5" (.90 m) Height 91.5" (2.32 m) Depth 6.25" (.16 m)	Width 35.5" (.90 m) Height 91.5" (2.32 m) Depth 6.25" (.16 m)	Top Box (Qty. 1): W: 25" (.64 m) H: 55" (1.40 m); D: 7.5" (.19 m) Side Panels (Qty. 2): W: 25" (.64 m) H: 92.5" (2.35 m); D: 11" (.28 m)
Shipping Weight	165 lbs. (74 kg)	135 lbs. (61.2 kg)	125 lbs. (56.7 kg)	250 lbs. (113.4 kg)
Operating Temperatures	-4° F (-20° C) to +122° F (50° C); Humidity to 95% non-condensing.	-4° F (-20° C) to +122° F (50° C); Humidity to 95% non-condensing.	-4° F (-20° C) to +140° F (60° C); Humidity to 95% non-condensing.	-4° F (-20° C) to +140° F (60° C); Humidity to 95% non-condensing.
Power	Fully automatic 100 to 240 VAC, 50 or 60 Hertz, 45 watts; no rewiring, switching or adjustments needed.	Fully automatic 100 to 240 VAC, 50 or 60 Hertz, 24 watts; no rewiring, switching or adjustments needed.	Fully automatic 100 to 240 VAC, 50 or 60 Hertz, 14 watts; no rewiring, switching or adjustments needed.	Fully automatic 100 to 240 VAC, 50 or 60 Hertz, 14 watts; no rewiring, switching or adjustments needed.
Regulatory Information	Meets TSA requirements for U.S. airports, ECAC, STAC, AENA, CJAC and DFT. Meets Electrical Safety and Compatibility Requirements for CE, FCC, CSA, IEC, ICNIRP and IEEE.	Meets Electrical Safety and Compatibility Requirements for CE, FCC, CSA, IEC, ICNIRP and IEEE.	Meets Electrical Safety and Compatibility Requirements for CE, FCC, CSA, IEC, ICNIRP and IEEE.	Meets Electrical Safety and Compatibility Requirements for CE, FCC, CSA, IEC, ICNIRP and IEEE.
Weatherproofing	Meets IP 55, IEC Standard. "Degrees of Protection provided by Enclosures," IEC 529. *IP 65 optional.	Meets IP 31, IEC Standard. "Degrees of Protection provided by Enclosures," IEC 529.	Meets IP 31, IEC Standard. "Degrees of Protection provided by Enclosures," IEC 529.	Meets IP 55, IEC Standard. "Degrees of Protection provided by Enclosures," IEC 529.
Construction	Attractive scratch and mar-resistant laminate. Detection Heads and Support: heavy duty aluminum.	Attractive scratch and mar-resistant laminate. Detection Heads and Support: heavy duty aluminum.	Attractive scratch and mar-resistant laminate. Detection Heads and Support: heavy duty aluminum.	Rugged, heavy duty 3/32" armor aluminum plates with resilient corner caps to protect against maximum abuse.
Control Outputs	Solid state switches (low voltage AC or DC) for operating external alarms and control devices.	Solid state switches (low voltage AC or DC) for operating external alarms and control devices.	Solid state switches (low voltage AC or DC) for operating external alarms and control devices.	Solid state switches (low voltage AC or DC) for operating external alarms and control devices.
(optional) Remote Control	Desktop Remote Control with Zone Indication and/or via network with CMA Interface Module.	Desktop Remote Control and/or via network with CMA Interface Module.	Desktop Remote Control and/or via network with CMA Interface Module.	Desktop Remote Control and/or via network with CMA Interface Module.
(optional) Networking	Manage individual or groups of walkthroughs and perform statistical analysis of throughput.	Remote access to controls and visual indicators with CMA Interface Module.	Remote access to controls and visual indicators with CMA Interface Module.	Remote access to controls and visual indicators with CMA Interface Module.
Alarm Indicators	33 zones: audible, visual and remote alarms.	Left, right, center zones: audible, visual, remote alarms.	Audible, visual and remote alarms.	Audible, visual and remote alarms.
Garrett Walk-Through Detector Safety	Garrett walk-through metal detectors meet U.S. and international regulatory requirements for electromagnetic safety. Extensive research has found no information that would indicate Garrett products have adverse effects on pregnancy, medical devices (such as pacemakers) or magnetic recording media. However, directives by physicians and medical device manufacturers regarding metal detectors should be followed.			



COUNTERMINE/ERW

Highly Advanced PI Technology
with All Terrain Versatility



All
Metals
Locator

Garrett's RECON-PRO All Metals Locator is designed to operate under any field conditions. This tactical metal detector is highly rugged, simple to operate and is waterproof to 3 meters. Deep detection capability for humanitarian ERW operations. Rapid tactical deployment for military searches for mines, UXO, and IED searches.

For more information:
Phone: 1.972.494.6151
Email: cm-erw@garrett.com
www.garrett.com/cm_erw.htm





American-Made, World Class Quality

Charles and Eleanor Garrett founded their company in 1964 to build a better metal detector. Through the decades, they have proudly maintained their personal goal—keeping their products American-made with the highest quality of standards. All Garrett products are designed, assembled, tested for quality control and shipped from the company headquarters in Garland, Texas.

Garrett offers the industry's only comprehensive training program for security and law enforcement metal detection screening.

Each class is taught by a metal detector expert and is tailored to the distinctive needs of the specific security attendees.

Hands-on learning sessions, an effective security screening book, a training DVD, and other industry-specific materials are part of each course. Courses are available for supervisory, operational and instructor level personnel in government, corporate and law enforcement agencies.

To enroll today, please call Garrett's Security Division at 972.494.6151 or email academy@garrett.com



Charles Garrett *Eleanor Garrett*

President & CEO

Executive
Vice President

Warranty Protection

Garrett Electronics, Inc. warrants that each piece of security equipment manufactured by Garrett is protected by a limited parts and labor warranty for a period of 24 months. *Sea Hunter* is protected by a one-year limited parts and labor warranty. During this 24-month period Garrett will inspect and evaluate all equipment returned to its authorized repair station or factory to determine if the equipment meets Garrett's performance specifications. Garrett will repair or replace at no charge to the owner all parts determined faulty. This Warranty does not cover batteries nor any and all failures caused by abuse, tampering, theft, failure due to weather, submersion, battery acid or other contaminants and equipment repairs made by an unauthorized party.



State of the art design.
American-made quality.
The choice for over 50 years.

**These marks certify Garrett's
Made in USA quality inside and out.**

Don't be fooled by imposters. All Garrett products are designed, assembled, tested for quality control, and shipped from our headquarters in Garland, Texas, USA. Garrett's ISO 9001 certified Quality Management System emblems are an outward reflection of the true quality within.



Made in the USA

GARRETT[®]
METAL DETECTORS
www.garrett.com

Garrett Metal Detectors
Security Division
1881 W. State Street Garland, TX 75042
Email: security@garrett.com
Toll Free (U.S. and Canada) **800.234.6151**
Tel: **1.972.494.6151**
Fax: **1.972.494.1881**

