



# KNOW THE SIZE OF A TARGET BEFORE YOU DIG



9.5" PROformance™ Imaging  
searchcoil included

Land headphones  
included  
PN: 1603000



PN: 1120570

Instructional DVD Included  
PN: 1678310



Exclusive Graphic Target  
Imaging included  
See next page for details.





# GTI SEARCHCOILS & ACCESSORIES



**12.5" PROformance™  
Imaging Searchcoil**  
PN: 2220000 \$249.95



**9.5" PROformance™  
Imaging Searchcoil**  
(Standard on GTI 2500)  
PN: 2220200 \$179.95



**10" x 14" PROformance™  
Power DD Searchcoil**  
PN: 2217300 \$179.95



**8.5" x 11" PROformance™  
DD Searchcoil**  
PN: 2222200 \$149.95



**5" x 8" PROformance™  
DD Searchcoil**  
PN: 2222900 \$139.95



**5" x 10" Scorch™  
DD Searchcoil**  
PN: 2219800 \$149.95



**4.5" Super Sniper™  
Searchcoil**  
PN: 2219700 \$99.95



See pg. 39 for  
Depth Multiplier  
options

## OPTIONAL CAMLOCK STEM

Black Middle Stem with Camlocks  
PN: 2347500



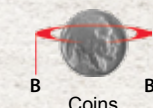
## ENVIRONMENTAL COVER-UP

Our GTI cover-up is easily installed to protect your metal detector from the weather and dirt.

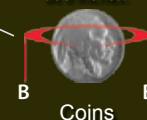
PN: 1618200



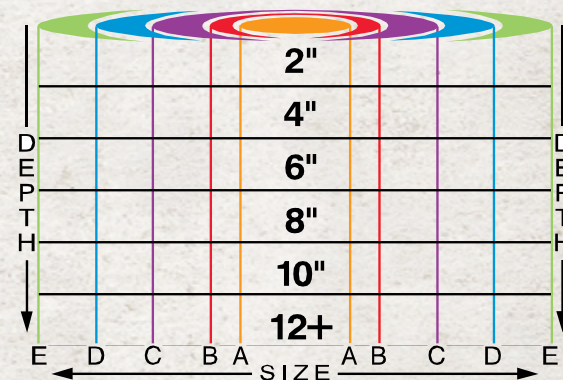
Garrett's true-size imaging gives target sizes ranging from A (smaller than a coin) to E (larger than a soda can).



Target ID indicates a U.S. quarter. TreasureVision® display shows target as Size B (coin) and depth at 6 inches.



Garrett's exclusive Graphic Target Imaging (GTI) shows actual SIZE and DEPTH of a target!



## GTI 2500 PRO-PACKAGE

PN: 1120580

Includes the GTI 2500 Metal Detector  
with a 9.5" Imaging coil plus FIVE accessories:

12.5" PROformance Imaging Searchcoil  
Deluxe Garrett Headphones  
Soft Case, Universal Detector Bag (camo)  
GTI Environmental Cover-up  
How to Find Lost Treasure Field Guide

PN: 2220000  
PN: 1603000  
PN: 1616901  
PN: 1618200  
PN: 1509300

(Savings based on total cost of items if purchased separately.)

GTI 2500 Pro-Package





# PULSE INDUCTION (PI) DETECTORS

Recommended for heavily mineralized ground and saltwater environments



## Advantages of PI Detectors

Pulse detectors provide the best performance over mineralized ground and in saltwater environments due to their ability to ignore minerals by virtue of their pulse characteristics.

## Iron Check Techniques

To help determine if a target is ferrous (iron), some users employ a reverse discrimination technique to check the item. With any of the three Garrett pulse detectors, simply increase Discrimination to maximum. If the target still produces a substantial signal, there is a good chance it is iron.

The Garrett ATX additionally offers a true Iron Check feature that produces a low-tone growl sound (Iron Audio) for many iron items.

## Things to Know About Pulse Induction Detectors:

- Pulse induction metal detectors are also commonly referred to as multiple frequency detectors.
- Target ID accuracy is reduced or nonexistent as compared to a VLF detector.
- Less energy efficient than VLF detectors, requiring more batteries and/or more frequent battery changes.

- More susceptible to external noise (EMI) and interference.

## Saltwater Tips

All PI detectors cancel most of the saltwater response by nature of their operation. In some of the more challenging saltwater environments when operating a Garrett *Sea Hunter*, you can add a small amount of Discrimination (or Delay) to cancel out the remaining saltwater response. With a Garrett ATX, however, it can be quickly ground balanced to the saltwater to provide the smoothest audio threshold and performance.





## High-End, All-Terrain Pulse Performance

Highly sensitive on tiny gold and extends depth in the most extreme mineralized soils.

See pg. 32 for interchangeable ATX searchcoils.

- **Maximum Detection on all targets** at the same time. No need to switch modes to enhance detection of one target while degrading another.
- **Advanced Ground Balance:** has wide range to ground balance from heavily mineralized ground (ironstone) to saltwater without switching to special modes.
- **Quick Iron Check feature** and adjustable Discrimination.
- **Motion and Non-Motion Modes:** provides optimum performance based on your hunting preference and conditions.
- **All Terrain use:** fully waterproof to 10 feet (3 meters).
- **Advanced DD searchcoil:** provides easy pinpointing and enhanced detection of small items without having to slow the scanning speed of the searchcoil.

Key to Features/Technology: see page 44



16 gold nuggets of different sizes found in Alaska by David F. of Kirkland, WA.





# LEAVE YOUR LIMITS IN THE DUST

PN: 1140860

*Instructional DVD Included*

PN: 1680000

Advanced DD Searchcoil  
10" x 12" **PROformance™**



## **ATX includes:**

*Land headphones, soft carry case, AA alkaline and rechargeable batteries, battery charger, coil cover (not shown), detector sling, owner's manual and instructional DVD*

## **Extreme Detection**



Four nuggets, as small as 0.12 grams and 0.26 grams, found by Steve H. of Reno, NV with his ATX detector.

## **Adjustable Operating Lengths**



## **Easy Access Adjustments**

Single push-button controls for Sensitivity, Discrimination, Threshold, Volume, Ground Track, Frequency Scan, and more can be adjusted with one hand.





# ATX Searchcoils & Accessories

## ATX SEARCHCOILS



### DeepSeeker 15" x 20" (38cm x 50cm) Mono Searchcoil

Use for locating larger and more deeply buried objects. Includes surface debris elimination.  
PN: 2234100



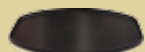
### 10" x 12" (25cm x 31cm) DD Searchcoil

Standard with ATX  
PN: 2234600



### 8" (20cm) Mono Searchcoil

Excellent depth on small targets. Enhanced maneuverability in heavy scrub and tight areas.  
PN: 2234000



### 15" x 20" Mono Closed Coil Cover

Provides solid protection for searching rocky soil areas. Bottom side of solid coil cover base can be used with your fingers to help locate tiny gold pieces.  
PN: 1608300



### 15" x 20" Mono Open Coil Cover

Lighter weight. More maneuverable when searching below water; collects less sand and sediment than a closed cover.  
PN: 1608200



### 10" x 12" DD Open Coil Cover

Lighter weight. More maneuverable when searching below water; collects less sand and sediment than a closed cover.  
PN: 1607500



### 10" x 12" DD Closed Coil Cover

Provides solid protection for searching rocky soil areas. Bottom side of solid coil cover base can be used to help locate tiny gold pieces.  
PN: 1607600



### 8" Mono Closed Coil Cover

Provides solid protection for searching rocky soil areas. Bottom side of solid coil cover base can be used to help locate tiny gold pieces.  
PN: 1607700

## ATX ACCESSORIES



### Garrett ATX Hard Case

Military-grade plastic. Designed to hold ATX soft case inside.  
PN: 1626500



### ATX Shaft Nut Spanner Wrench

Use for removing camlocks on the ATX for thorough interior cleaning of assembly.  
PN: 1625200



### ATX Camo Cap

PN: 1664200

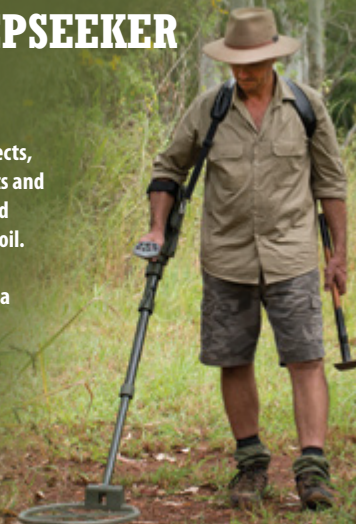
### Other suggested ATX accessories:

- Waterproof headphones
- Retriever II pick
- Garrett Daypack with D-ring harness/bungee for attaching an ATX.

See pgs. 41–43 for these and other accessories.

## ATX™ DEEPSEEKER PACKAGE

Find deeply buried objects, large gold, caches, relics and more with the oversized ATX DeepSeeker searchcoil. Buy the package and save money—plus get a free hard case!



PN: 1140820

### Includes:

- ATX with 10" x 12" DD coil
- Soft storage/travel case
- Battery charger
- Land headphones
- AA alkaline and rechargeable batteries
- Searchcoil cover<sup>1</sup> (not shown)

### PLUS:

- 20" Deepseeker mono searchcoil
- Military-grade Garrett hard case
- Garrett Detector Sling

\* Savings based on actual cost of items if purchased separately.



Accessory items subject to change



# LEAVE YOUR LIMITS IN THE DUST

Garrett's pulse induction detectors are built tough, ready to take on whatever environmental challenges you encounter.

## TECHNICAL SPECIFICATIONS: Garrett PI Detectors

COMPARISON CHART	Sea Hunter <sup>™</sup> <small>Mark II</small>	ATX <sup>™</sup> EXTREME PULSE INDUCTION
Overview	Proven PI technology with 22 Frequencies. Ideal for saltwater hunting and wreck diving use.	Garrett's highest performance PI technology. Provides maximum sensitivity on all targets all the time. Easy access to all controls with one hand. Includes advanced features to overcome the most extreme environmental conditions.
Detection Performance	Good detection on all targets from jewelry to coins to nuggets.	Superior sensitivity on all targets, especially on small, low conductivity items (sub-gram nuggets, fine jewelry, etc.).
Ground Balance Capabilities		
Balances to Saltwater	NO; use Discrim if necessary.	YES. Includes salt balance range
FastTrack Ground Balance	NO	YES
Continuous GroundTrack	NO	4 settings: Off, Slow, Med, Fast
User Controls/Functions	Control knobs to alter Audio Threshold, Discrimination. Sensitivity/Depth adjustment is fixed.	LED indicators show signal strength, current settings. Easy push-button control to alter Audio Threshold (25 settings), Volume, Sensitivity (13 settings), Retune
EMI Control	Good immunity in moderate EMI environments. No frequency adjustment available.	Excellent immunity in more severe EMI environments. Has push-button automatic frequency scan and selection to provide the smoothest threshold.
Discrimination/Delay	Adjustable via control knob	25 settings, via push-button control
Iron Audio	NO	YES. Exclusive quick iron ID
Search Modes	Two Trash Elim Patterns (both Motion Modes)	Choose from Motion or Non-Motion Modes
Submersion Depth	200 feet (65m)	10 feet (3m)
Headphones (Included)	Submersible	Standard land-use
Standard Searchcoil	8" Mono PROformance <sup>™</sup>	10" x 12" DD PROformance <sup>™</sup>
Length (Adjustable)	28" to 52" (.71m - 1.32m)	20" to 68" (.51m - 1.72m)
Total Weight	5.1 lbs (2.3 kgs) stem-mounted	6.9 lbs (3.13 kgs)
Batteries	8 AA (included)	8 AA (included); rechargeables and charger included
Warranty	1 Year, Limited Parts/Labor	2 Year, Limited Parts/Labor





# Sea Hunter<sup>™</sup> Mark II

## Wreck Diving's Trusted Veteran

Recommended for heavily mineralized ground and saltwater environments

See pg. 33 for optional *Sea Hunter* searchcoil.

### Superior Automatic Salt Elimination Ability

using advanced Pulse Induction technology.

### Search Mode

Non-Motion, All-Metal Deepseeking mode with Full Range PI Discrimination

### User Adjustable Controls

Elimination, Audio Threshold

### Independently Sealed Battery Compartment

### Two Discrimination Modes

Two discrim modes offer varying levels of non-ferrous target discrimination.

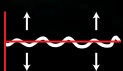
#### • Discrete Trash Elimination:

Use to eliminate most pull tabs and foil without significantly degrading sensitivity for rings, coins.

#### • Standard Trash Elimination:

Provides the deepest possible detection; allows a very slow searchcoil sweep in areas with little trash.

Key to Features/Technology: see page 44



The *Sea Hunter* can also be used in the hip mount configuration for surf and beach hunting.





Wreck diver Kiersten Mottl examines a gold ring she has just found on a 300-year-old shipwreck off Sierra Leone, West Africa.

Photo courtesy of Leigh Bishop.

## EXPLORE FOR TREASURE DOWN TO 200 FEET!

PN: 1151970

Instructional DVD Included PN: 1679000

Hip mount holster included PN: 9833400

Belt assembly included PN: 2226600

(see page 32 for image)



8" PROformance™ mono  
searchcoil included



**INCLUDED:**

**Free Submersible Headphones**

PN: 2202100



**OPTIONAL:**

**10" x 14" Mono Searchcoil**

PN: 2215300



garrett.com





# EXPLORE THE GREAT OUTDOORS WITH GARRETT

You might get there by horseback, by ATV or by hiking. It might be a multi-day camping excursion. Or it could be a day trip to parts unknown.

Be sure to take along a Garrett detector or gold pan set on your next outing. You never know where a rustic cabin might appear or whether that little stream just might contain some gold. Good things come to those who search. Make Garrett a fun part of your next outdoor adventure.

**Discovery awaits . . .**









# GOLD PANS

**Garrett's 90° riffled design**  
prevents gold from sloshing out of the pan.



## GOLD PANS



### 15" SuperSluice

PN: 1650400

- Traps fine gold to nuggets over 1 oz.
- Twin 1/2" riffles
- Deep throat funnel

"The Super Sluice pan is the best pan for bulk testing! You can rip through more material faster than any other test pan." Todd Hoffman



### 14" Sifter/Classifier

PN: 1650200

- Great for wet or dry conditions
- Sifts gold, jewelry, relics and debris
- Fits 5 gallon bucket
- 7/16" (diagonally measured) exit holes



### 14" Prospector

PN: 1650000

- Great for wet/dry conditions
- Three 1/4" riffles
- General purpose



### 10" Backpacker

PN: 1650100

- Great for wet /dry panning or finishing
- Four 1/4" riffles
- Lightweight
- Portable

## GOLD PAN KITS



### Deluxe Gold Pan Kit

PN: 1651400

- 15" SuperSluice Pan
- 14" Prospector Pan
- 10" Backpacker Pan
- 14" Sifter/Classifier
- Gold Guzzler bottle
- 2 Gold vials
- Tweezers
- How to Find Gold field guide by Charles Garrett / Roy Lagal
- Gold Panning is Easy book
- Gold Panning Like a Pro DVD

### Gold Pan Kit

PN: 1651300

- 14" Prospector Pan
- 10" Backpacker Pan
- 14" Sifter/Classifier
- Gold Guzzler Bottle



- 2 Gold vials
- Tweezers
- How to Find Gold field guide by Charles Garrett and Roy Lagal

Garrett's Gravity Trap® gold pan series has led the prospecting industry for years. These durable pans have been tested and proven worldwide by Charles Garrett, Roy Lagal, and tens of thousands of individual prospectors.

Garrett's Gravity Trap gold pans are the perfect tool for gold-seekers of any age. They feature a 90° riffled design that ensures safe, rapid gold recovery in wet or dry conditions. All Garrett pans are lightweight, green for enhanced gold nugget visibility, and are virtually indestructible.

## Perfect for Dry Panning



Charles Garrett dry panning for gold in Utah.





Watch "Gold Panning Like a Pro" video with Freddy Dodge on [garrett.com](http://garrett.com).

Garrett's Gravity Trap® gold pans are used by Todd Hoffman's mining team to continually test the gold content of the areas they mine with their heavy equipment. "If we're mining dirt without gold in it, we're just burning fuel," says Todd.

## TRUSTED BY 316 MINING



"We really rely on our Garrett gold pans," says Todd. "I like that Garrett is family-owned and made in America, a couple of things me and my dad Jack believe in."

—Todd Hoffman, 316 Mining



"We exclusively use the Garrett gold pan. We trust it. For the amount of gold we go through, we want to make sure we get it all."

—Jack Hoffman, 316 Mining

[garrett.com](http://garrett.com) 



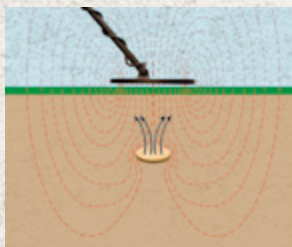
# UNDERSTANDING SEARCHCOILS



## HOW SEARCHCOILS WORK

Understanding the basics of searchcoils will empower you with the ability to choose the best searchcoil for each application. Searchcoils generally consist of two internal sets of coiled wires, a Transmit coil (TX) and a Receive coil (RX). Mono coils can be different in that one coil acts as both the TX and the RX. When the detector is turned on, the TX coil generates a magnetic field in the surrounding space.

When a metallic object is within this generated magnetic field, it will create a distortion in the magnetic field. The RX coil will sense this distortion and send a signal to the control housing.

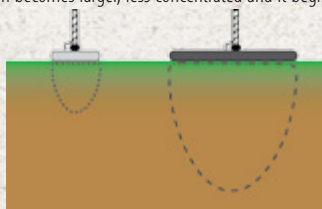


*The transmit coil (TX) creates a magnetic field while the Receive coil (RX) senses distortion in this field and signals the control housing.*

## SEARCHCOIL DEPTH

As a rule of thumb, the detection depth of a searchcoil will be approximately equal to its diameter, for a coin-sized object.

As a searchcoil's size increases, its field pattern becomes larger, less concentrated and it begins to miss small objects. For a coin-sized object, this effect becomes noticeable when using searchcoils larger than about 15" in diameter.



*Generally speaking, the larger the searchcoil, the larger the magnetic field.*

## SEARCHCOIL SHAPES AND SIZES

To help determine the best searchcoil size and shape for your needs, consider the hunting environment in which it will be used and the targets being sought.



Circular

Elliptical

*The two most common searchcoil shapes (not to be confused with configurations) are circular and elliptical.*

- **Elliptical Searchcoils**—more maneuverable than a circular searchcoil. Provides greater coverage than a circular coil due to its elongated length.
- **Circular searchcoils**—most commonly used shape. Provides slightly more detection depth and sensitivity in non-mineralized soil. Searchcoils also come in a 2-box configuration, which are used for detecting deeply buried targets.

### Small Searchcoils (Less than 6" diameter)

- Concentrated magnetic field; the best choice for hunting in areas with a lot of metal debris.
- Ideal for detecting very small objects.
- Less coverage per sweep; more scans required.



## SUPER SNIPER

*Available for GTI, ACEs, AT Pro and AT Gold*

Garrett's smaller *Super Sniper* specialty searchcoils are designed to search in very tight areas or over ground that is littered with metal objects. These popular 4.5" coils offer improved target identification and are also ideal for finding tiny gold nuggets.

### Medium Searchcoils (8"-9" diameter)

- Best choice for general-purpose hunting (including coins and coin-sized targets).
- Provides the best combination of magnetic field concentration, detection depth and capability to detect the greatest range of target sizes within the detection area.
- Lightweight and easy to maneuver.

*There is a direct relationship between the size of a searchcoil and the size of its magnetic field.*

*The magnetic field of a small searchcoil is not as deep as that of a large searchcoil, but is more concentrated.*



### Large Searchcoils (More than 9" diameter)

- Provides greater depth and coverage due to wider and deeper magnetic fields.
- Best choice for hunting targets that are large and deeply buried, such as caches and large relics.
- Larger scan area can be a problem in trashy areas where the searchcoil is detecting several targets at once.





# MULTIPLY YOUR FINDS WITH THE RIGHT SEARCHCOIL

## CONFIGURATIONS

There are five basic searchcoil configurations: Concentric, Mono, Imaging, DD and 2-box. Hunting applications and ground conditions help determine which is the best choice for you.

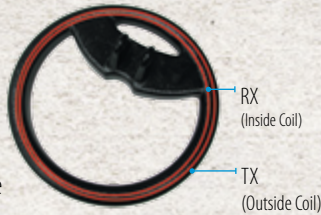
### Concentric Searchcoils

- TX and RX are usually arranged as shown.
- This configuration **provides the largest possible detection field and greatest detection depth**, making the concentric coil potentially the most sensitive configuration available.
- Provides the most symmetrical detection field, allowing ease in pinpointing and consistency in target identification.
- Unfortunately, this configuration is the most susceptible to interference from ground minerals, resulting in substantial performance loss over heavily mineralized ground.



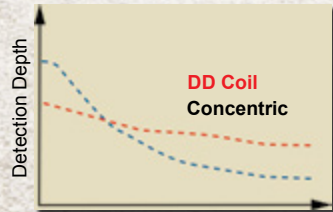
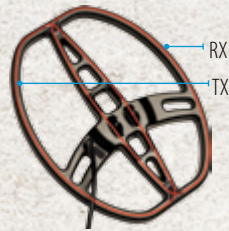
### Mono Searchcoils

- Available only on Pulse Induction Detectors.
- Variation of the concentric configuration. Can be made with the TX and the RX coils located together or as a single coil acting as both the TX and RX.
- Detection and performance characteristics of mono coils are essentially the same as concentric coils.



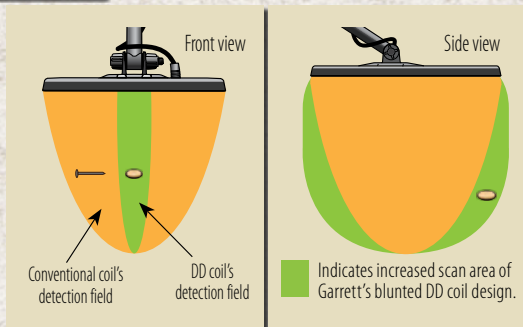
### DD Searchcoils

- Both TX and RX are in the shape of a "D".
- Provides greater detection depth and performance in heavily mineralized ground and saltwater.
- A long, narrow detection field runs beneath the DD's overlapping center section from front to back.
- The DD configuration is less sensitive than a concentric searchcoil of the same size, over non-mineralized ground or in air testing.



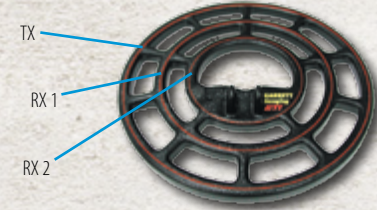
- DD coils are highly recommended when hunting over mineralized ground commonly found when prospecting and relic hunting. **The DD searchcoil outperforms the concentric searchcoil in highly mineralized soil.**

The DD coil's narrow detection field offers better target separation than a conventional coil.



### Imaging Searchcoils (Garrett Exclusive)

- An enhanced version of the concentric configuration that features an additional RX coil.
- Extra coil provides additional target information for true target depth perception and true target-sizing capabilities.
- Sizing information helps distinguish between trash and good targets of the same conductivity (e.g. a clad coin vs a soda can).



### 2-box Configuration (Depth Multiplier)

In this configuration, the TX and the RX coils are physically several feet apart. This provides a lightweight, manageable means of achieving the performance of a 3' to 4' diameter searchcoil. Because of its large detection field, the 2-box is the best choice for detecting large, deeply buried objects such as relics and caches. Also, its large detection field ignores objects smaller than 3" in diameter—advantageous when hunting in areas heavily littered with small trash objects.

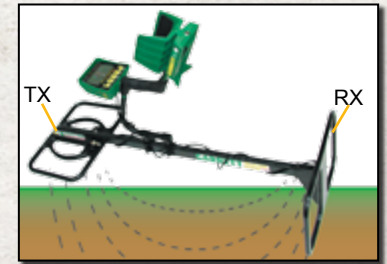
### Garrett TreasureHound™ EagleEye™ Depth Multiplier

PN: 1611800

(Available on GTI 2500 only)

#### Benefits:

- Find larger targets at twice the depth of conventional coils.
- Use the EagleEye front coil for accurate pinpointing and small object detection.
- Easily switch from depth multiplier searching to pinpoint mode with the touch of a button.
- Eliminates the need to switch coils or have a second detector to zero in on a target.



## GTI 2500 EagleEye Depth Multiplier Package

PN: 1120530

### INCREASE YOUR DEPTH 2x–3x ON LARGE TARGETS

GTI 2500 EagleEye Multiplier Package includes the GTI 2500 Metal Detector with the 9.5" Imaging Searchcoil and TreasureHound EagleEye Searchcoil.

#### With Package

TreasureHound EagleEye™  
Searchcoil PN: 1611800  
(Searchcoil only)

For use only with the  
Garrett GTI 2500 detector.





# GARRETT LIBRARY COLLECTION

Since 1974



## STANDARD SIZE BOOKS

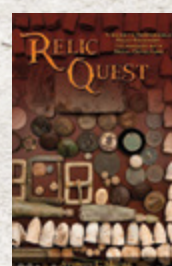
Each book is 5.5" x 8.5"



**Ghost Town Treasures:  
Ruins, Relics & Caches**  
by Charles Garrett  
Revised edition.  
156 pages  
PN 1508200



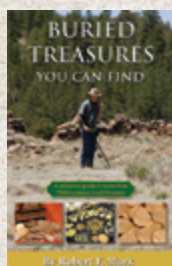
**Treasure Hunting  
for Fun & Profit**  
by Charles Garrett  
204 pages  
PN 1508300



**Relic Quest**  
by Stephen L. Moore  
Research tips, field techniques, and stories from dozens of relic diggers. More than 1,000 color photos. Revised second edition.  
564 pages  
PN 1510000



**The New Successful  
Coin Hunting**  
by Charles Garrett  
Revised edition of the authoritative guide on finding coins.  
259 pages  
PN 1501500



**Buried Treasures You  
Can Find**  
by Sir Robert Marx  
State-by-state listings of sites where treasure is believed to exist.  
365 pages  
PN 1500000



**Gold Panning is Easy**  
by Roy Lagal  
Basics on finding and panning for gold.  
148 pages  
PN 1505470



**Treasure Caches  
Can Be Found**  
by Charles Garrett  
How to research, locate and recover abandoned caches.  
194 pages  
PN 1508600



**The World's Richest  
Wrecks: A Wreck Diver's  
Guide to Gold and Silver  
Treasures of the Seas**  
by Sir Robert Marx  
and Jenifer Marx  
456 pages  
Hard Cover:  
PN 1509810  
Soft Cover:  
PN 1509800

## CHARLES GARRETT FIELD GUIDES

Small, Pocket-Size Books: 3.5" x 5"



**How to Find Lost Treasure**  
Learn the basics of treasure hunting!  
72 pages  
PN 1509300



**How to Search Sand and Surf:  
Treasure Recovery at the Beach**  
72 pages  
PN 1509500



**Understanding Treasure Signs  
and Symbols**  
300+ treasure symbol illustrations.  
72 pages  
PN 1546000



**How to Find Gold:  
Metal Detecting and Panning**  
by Charles Garrett and Roy Lagal  
72 pages  
PN 1509400



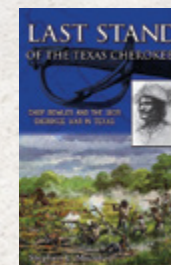
**The Sport of Coin Hunting  
with a Metal Detector**  
Includes coin ID guide!  
84 pages  
PN 1509600



**Introduction to Metal Detecting  
in Europe**  
Author's experiences, tips and techniques.  
76 pages  
PN 1546200



**Family Treasure Hunting—**  
A beginner's guide for hobbyists of all ages.  
80 pages  
PN 1546300



**Last Stand of the  
Texas Cherokees**  
by Stephen L. Moore  
224 pages (relic recovery)  
PN 1509900



**You Can Find Gold with  
a Metal Detector**  
by Charles Garrett and  
Roy Lagal  
Guide to electronic  
prospecting.  
140 pages  
PN 1545500

Visit [garrett.com](http://garrett.com) for more details on all RAM Books

View sample pages from any title!





Includes bungee cord to attach to a metal detector (attaches to D-ring on either left or right side of the daypack).



## Garrett All-Purpose Backpack

Approximately 21" interior height x 13" width. Will hold a disassembled Garrett metal detector. Includes: adjustable straps; zippered front accessory pocket; interior searchcoil pouch; pair of side pouches to hold drinks. PN: 1651700

## Garrett Detecting Daypack

Approximately 19" interior height x 13.5" width. Adjustable straps; padded for comfort in the field.

- Two zippered compartments to store spare coils, accessories, snacks, etc. for field use.
  - Three interior pockets (two zippered), plus internal hook for attaching car key ring.
  - Sternum strap with quick release buckle.
  - Waist strap with utility pouch (to hold smart phone, treasure finds, sunglasses, etc.).
  - Two mesh exterior pockets for drinks, etc.
  - Exterior MOLLE-type webbing grid for attaching accessories.
  - Exterior straps to secure jacket, extra clothing.
- PN: 1626800

## CAPS

One size fits most



**Garrett Metal Detectors**  
Metallic logo with textured gold color  
PN: 1663300



**Garrett**  
Black Cap  
PN: 1663100

Visit [garrett.com](http://garrett.com) to see the latest caps, T-shirts, and other Garrett-branded items.

## BAGS



**Stow and go**—Holds any current Garrett detector without removing the searchcoil!

## Digital Camouflage Soft Case, Universal Detector

Padded travel/storage bag, 50" length with full zipper opening, carrying handle and backpack straps. PN: 1616901



Reinforced handle



Five Velcro pouches to hold spare searchcoils, recovery tools, a *PRO-Pointer*, manual, gloves, etc.



## All-Purpose Carry Bag

Reinforced polyester, 50" length with two zipper pockets. Includes convenient shoulder strap and carrying handles with padded handpad. Sized to hold any current Garrett detector without removing searchcoil. PN: 1608700



# TOOLS & ACCESSORIES

## SEARCHCOIL COVERS



**10" x 14" Coil Cover**  
PN: 1606400



**9.5" Coil Cover**  
PN: 1606500



**9" x 12" Coil Cover**  
PN: 1612600



**6.5" x 9" Coil Cover**  
PN: 1605700



**5" x 10" Coil Cover**  
PN: 1602500



**3" x 7" Coil Cover**  
PN: 1601400



**4.5" Coil Cover**  
PN: 1604200



**8.5" x 11" DD Coil Cover**  
PN: 1606600



**5" x 8" DD Coil Cover**  
PN: 1607400

**You can prevent this!**

Protect your investment with Garrett searchcoil covers.

## HEADPHONES



### Garrett Master Sound Headphones

- Dual volume controls. Adjust signal levels to suit individual hearing requirements and to enhance weak signals.
- Comfortable leather headband and ear cushions.
- Reinforced 10-foot coiled cord with right angle.
- Speaker impedance: 8 ohms per channel. Stereo.
- Frequency response: 30-18,000 Hz.



PN: 1603000 with 1/4-inch stereo phone plug.



### Garrett ClearSound Easy Stow Headphones

- 41" (104.1 cm) coiled cord extends to 82" (208.3 cm)
  - Padded ear cups
  - In-Line volume control
  - Rotating ear pieces
- PN: 1612700



### Submersible Headphones

- For use with Garrett *AT Pro*, *AT Gold*, *ATX*, and *Sea Hunter Mark II* metal detectors.
  - Padded ear cups
- PN: 2202100



### Garrett TreasureSound™ Headphones

- Includes in-line volume control.
- PN: 1612500



### 1/4" Headphone Adapter

- Allows land-use headphones with a 1/4" male jack to the Garrett *AT Pro*, *AT Gold*, *ATX*, and *Sea Hunter* models. (Not intended for submerged use.)
- PN: 1626000





# RECOVERY TOOLS

## Camo Digger's Pouch

This 10" deep zippered bag secures with its own belt. Fits up to 48" waist. PN: 1612900



Exterior MOLLE-type webbing grid is ideal for attaching *PRO-Pointer*, cell phone, digging tools, etc.



Interior zippered treasure pocket to separate treasure from trash.



**Camo Pouch 18" Belt Extender** (optional)  
PN: 1613000



## Treasure Pouch

Loop this 4.75" deep bag onto your belt. Contains 4 treasure pockets inside with a Velcro fastener. PN: 1608800

## Treasure Probe

Locate your target with this 9" hunting instrument. PN: 1605800



## Stainless Steel Treasure Trowel

This 10" trowel has a ribbed, no-slip handle. A gauge on the inside blade measures in inches and centimeters.



PN: 1606100

## Treasure Digger

Avoid marring coins while digging with this tough polymer trowel, with marks to gauge depth of a hole. PN: 1606000



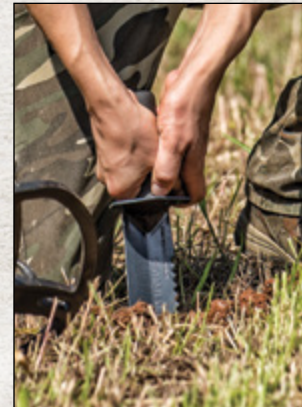
## Treasure Digger Kit

Includes Treasure Pouch, Treasure Probe and Treasure Digger. PN: 1601070



## Garrett™ Edge Digger

(7.5" digging blade; 12" total length)  
Robust steel blade with cutting edge teeth. Non-slip blade guard with comfortable rubber handle. Includes Garrett carry sheath for belt mount use. PN: 1626200



## Garrett Retriever II™ Pick

(19" steel with hand grip and reinforced head in silver vein powder coat finish)

Includes chiseled 3" digging blade and a narrow tip on the other end for picking through tight, rocky areas.

Weight: 2.8 lbs. (Holster not included.)  
PN: 1626700

Powerful rare earth magnet on top to extract ferrous items from your target area.

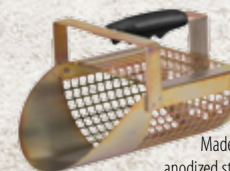


Ideal for prospecting and shallow water hunting in rocky areas.

# SAND SCOOPS



**Rugged Plastic Sand Scoop**  
PN: 1600971



**Metal Sand Scoop**  
PN: 1600970

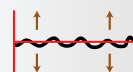
Made of anodized steel



**Stainless Steel Sand Scoop**  
PN: 1600900



# KEY FEATURES AND TECHNOLOGY DEFINITIONS



## ADJUSTABLE THRESHOLD

Allows the user to manually adjust the audio threshold (the constant background sound or "hum") to better hear targets.



## ALL METAL (TRUE)

Detects all types of metal and provides the greatest possible detection depth and sensitivity.



## ALL METAL IRON AUDIO™

Garrett exclusive feature that audibly identifies discriminated iron while operating in a True All Metal Mode.



## ALL TERRAIN

Designed for use in wet, humid and dusty environments. Weatherproof housing can be submerged to 10 feet.



## DIGITAL TARGET ID

Numerical scale from 0 to 99; indicates a target metal's conductivity for increased ability to distinguish targets from each other.



## ELECTRONIC PINPOINTING

This non-motion All-Metal Mode function is used to precisely locate a detected target's location in the ground.



## ENHANCED IRON RESOLUTION™

Increased resolution (more pixels) allows more precise control of how much iron discrimination to apply. This feature is particularly useful in areas where desired treasure targets are being masked by iron trash.



## FAST TRACK™ GROUND BALANCE

Automatic feature that allows user to quickly ground balance the detector in mineralized soil conditions.



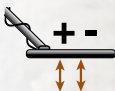
## GRAPHIC TARGET ANALYZING

Simultaneously shows a treasure target's conductivity and the detector's discrimination pattern.



## GRAPHIC TARGET IMAGING™

This Garrett exclusive technology measures and displays a target's true size (five size options) and its depth.



## GROUND BALANCE (MANUAL)

Allows the operator to manually adjust the detector's ground balance to reduce the detrimental effects of ground mineralization.



## GROUND BALANCE WINDOW™

Garrett exclusive feature that allows the user to "spread" the ground balance setting to reduce the response to subtle ground variations.



## GROUND TRACK (AUTOMATIC)

Detector engineered with technology to continuously measure ground mineralization and automatically adjust itself for optimum performance. (Four track speeds on ATX)



## HIGH-RESOLUTION IRON DISCRIMINATION™

Provides fine resolution of iron discrimination for the most precise ability to separate a good target from iron trash.



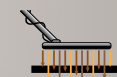
## IRON AUDIO™

Allows user to hear discriminated iron (normally silenced) in order to avoid digging tricky, undesired flat iron targets such as bottle caps or steel washers. See page 23 for details.



## IRON CHECK (ATX ONLY)

Allows the operator to audibly identify iron targets when using a DD searchcoil.



## MULTI-FREQUENCY (PULSE INDUCTION)

Detector that divides its power into multiple frequencies to overcome the effects of mineralized soil and saltwater content. Discrimination and Target ID capabilities are limited.



## ONE-TOUCH TREASURE HUNTING

With the touch of a button, your detector is: powered on; automatically reset to factory (or your) settings; and ready to search!



## PRO MODE AUDIO

Proportional audio response and Tone Roll Audio features provide more target information. See page 23 for details.



## POWERMASTER™ DSP

Digital signal processor technology improves your ability to search; helps adapt to ground conditions and to your individual scanning style/speed.



## SCANTRACK™ OPTIMIZATION

Garrett's circuitry automatically adjusts to produce maximum audio signals on every detected target regardless of whether the user's searchcoil swing speed is slower or faster than optimum.



## WRECK DIVING (200 FT)

Detector's housing and connections are fully sealed for ability to submerge the unit to depths up to 200 feet.



## VOLUME CONTROL

Allows adjustment of the maximum volume of sound produced by the detector when a target is encountered.





## GO AHEAD . . . BE EXCITED!

Ringmaster Tim and King George have trusted Garrett metal detectors and pinpointers for years. They still get fired up when they hit a "nectar sector."

Tune in to watch KG and Ringy on National Geographic Channel's *Diggers* series. You'll see how much fun you can have with the sport of metal detecting.



# Share Your All-Terrain Detecting Adventures with Garrett



Garrett Metal  
Detectors



## EVERYONE LOVES A GOOD ADVENTURE STORY

Thousands of people visit Garrett's Facebook site each day to see the latest finds posted by others. Some Garrett fans post treasure hunting videos. Some post pictures from rallies and organized hunts.

Michael and Abby (seen in these images) know that some of the good detecting sites are off the beaten trail. They're not afraid to get a little dirty getting there! And they know their Garrett AT detectors can handle a little mud and water.



## CONNECT WITH OTHERS ON GARRETT SOCIAL MEDIA



New treasure finds are posted every day. See what others are finding where they live—around the world! Make new connections. Find out about upcoming hunts. These are just a few recent images posted. Get your Garrett, get out there, and make your own memories!





# You could win a FREE Metal Detector!

Each month, Vaughan Garrett selects one U.S. and one International winner from all the Garrett customers who submit their testimonial photos and stories. "By about the tenth of each month, I will announce who I selected as my favorites from all the previous month's submissions," Vaughan explains.

Vaughan's Favorite Find winners in the past have received a free *Pro-Pointer AT* pinpointer or even a metal detector. Visit [garrett.com](http://garrett.com) to see what great gift item Vaughan is currently giving away!

**FREE Garrett branded items for everyone who enters!**

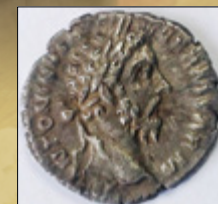
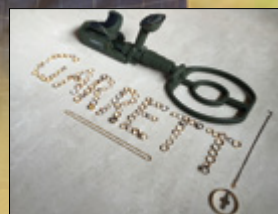
**There are 3 ways to submit a story to Vaughan:**

1. Email [testimonials@garrett.com](mailto:testimonials@garrett.com)
2. Mail to: Garrett Metal Detectors  
Attn: Marketing Depart.  
1881 W. State Street  
Garland, TX 75042
3. Submit your photo and story online by using the "Submit a Story" form:

<http://www.garrett.com/story/>

**Here are some  
of the recent  
winners!**

Visit [garrett.com](http://garrett.com) to submit your story. You could be next!



Here are a few Garrett Videos to watch and enjoy from our channel:

**Subscribe to  
GarrettDetectors  
Channel**

Entertainment. Information.  
Enjoy organized hunts, tips  
and from the field videos.

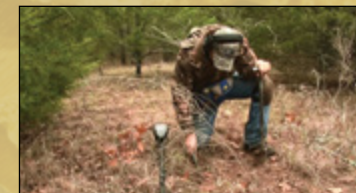
[www.youtube.com/garrettdetectors](http://www.youtube.com/garrettdetectors)



Another AquaChigger Adventure



Gold Panning Like a Pro



Seeing signs pays off...twice!

**Join the Adventure!**

[garrett.com](http://garrett.com)





# LET YOUR ADVENTURE BEGIN...



**GARRETT**  
METAL DETECTORS  
[garrett.com](http://garrett.com)

## GARRETT METAL DETECTORS

1881 W. State Street  
Garland, TX 75042  
Tel: 1.972.494.6151  
Fax: 1.972.494.1881  
Email: [sales@garrett.com](mailto:sales@garrett.com)

## Sport Division

Toll Free (US & Canada): **1.800.527.4011**

## Security Division

Toll Free (US & Canada): **1.800.234.6151**

Website: [www.garrett.com](http://www.garrett.com)

Contact Garrett for more product information,  
or visit your local dealer:

Warranty Protection: Garrett stands behind every product it builds and offers dependable warranty protection to each buyer. All Garrett land detectors and searchcoils are protected by a two-year limited parts and labor warranty. Sea Hunter is protected by a one-year limited parts and labor warranty. In the course of product improvement, Garrett reserves the right to make changes to the design and technical features of its products.

ACE 150, ACE 250, ACE 350, All Metal Iron Audio, AT Gold, AT Pro, ATX, Automatic Ground Track, Coin Alert, Crossfire, CX Plus, Deepseeker, Depth Multiplier, EagleEye, Enhanced Iron Resolution, Fast Track, Garrett's Gravity Trap, GTA, Graphic Target Analyzer, GTI, Graphic Target Imaging, GTP, Graphic Target Profiling, Ground Balance Window, Iron Audio, Master Hunter, Power Master, Precise Iron Resolution, Pro Mode Audio, Pro-Pointer, Pro-Pointer AT, RAM Books, Scan Track, Scorch, Scorpion Gold Stinger, Sea Hunter Mark II, ScubaMate, Super Deep Imaging, Super Sluice, Super Sniper, Target Imaging, Texas Twister, TreasureEye, TreasureHound, Treasure Max, Treasure Talk, Treasure Vision, Treasure Sound Garrett Metal Detectors and [garrett.com](http://garrett.com) are trademarks and registered trademarks of Garrett Electronics, Inc.

**Products and special offers listed in this Buyer's Guide are effective through December 31, 2016.** PN1540016.A 12/2015 © 2015-2016 Garrett Electronics, Inc.



7 86156 00468 9