

# THE **SPORT**™ OF METAL DETECTING



**GARRETT**®  
METAL DETECTORS



MADE IN  
THE USA



# CREATE YOUR OWN ADVENTURE WITH GARRETT





## Escape from routine...

It's healthy to take a break once in a while from the office, the grind, and the daily pressure.

Grab your Garrett and get out there. Unwind and search for that great find, wherever your "there" might be.

Take your detector along on a camping trip or on your next hike. You never know when you might encounter some long-forgotten site that's just waiting to be hunted. With Garrett's completely waterproof "All Terrain" detector series, you might even find history waiting for you underwater!

*Know the laws in your area, and always obtain proper permission from the land owners before visiting a site to metal detect.*





# WE CELEBRATE YOUR FINDS WITH YOU

Since 1964, the Garrett family has enjoyed helping our customers to find more treasure.



Charles Garrett searching for treasure with one of his early detectors in the early 1970s.

## IT'S WHAT GOT OUR FOUNDER STARTED.

Charles and Eleanor Garrett founded Garrett Metal Detectors in 1964. Their original goal was to build a better metal detector than what Charles had been able to purchase for his own use on the market. He spent considerable time in the field, testing each of his company's new designs.

Today, Garrett Metal Detectors still stands for high quality technology, made available at fair prices and with the best possible customer service.

During his life, Charles Garrett was always thrilled to see the many finds his customers discovered with Garrett detectors—silver, gold, old coins, battlefield relics, jewelry, and caches of treasure. His son, Vaughan Garrett, continues to look at the favorite finds submitted to the company each month. He even awards prizes to his personal favorites each month (see page 47 for details on this).

Dig responsibly and with proper permission. Leave your dig site in better condition than you found it by filling in all holes and hauling out any trash. Enjoy the great outdoors, a new-found sense of adventure, and continue to pursue our great sport of metal detecting.



Eleanor Garrett and her son Vaughan share treasure stories with local detectorists who stopped by the Garrett Museum to show some of their detecting finds.



Charles Garrett and his son Vaughan hold some of the Roman and Greek coins they found together on a detecting trip.



Finder: Kenneth C., Shepherdsville, KY  
Using: ACE 250  
Find: 1759 King George II gold guinea coin



Finder: Luke A., Kinglake, Victoria, Australia  
Using: AT Gold  
Find: Gold nugget finds; 23 grams total



Finder: Rob P., Grayson, GA  
Using: AT Pro  
Find: Civil War Confederate buckle

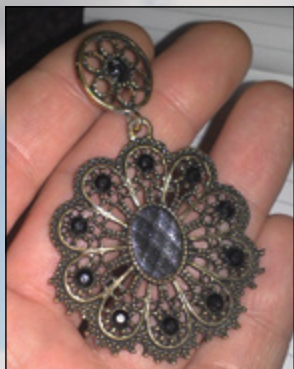


**All Garrett  
detectors  
are proudly  
MADE IN AMERICA**



# WHAT'S ON YOUR BUCKET LIST?

It's out there, whatever it is. Time to get huntin' for it!



Finder: Hen B., Amersfoort, Netherlands  
Using: ACE 150  
Find: Earring found at an old farmhouse



Finder: Michael B., Palmer, TX  
Using: AT Gold  
Find: A 1889-O Morgan silver dollar and a 1922 Peace Dollar



Finder: Gene S., Houston, TX  
Using: AT Pro  
Find: .925 sterling silver ring



Finder: Jeremy P., Babb, MT  
Using: ACE 250  
Find: 1838 powder flask with U.S. shield design with 28 stars



Finder: Bjørnar H., Kongsberg, Norway  
Using: AT Pro International  
Find: 30-gram gold and silver cross from the Middle Ages (circa 1300-1400 AD)

Finder: Mark S., Forestdale, Australia  
Using: ATX  
Find: Gold nuggets found with his son while prospecting



Finder: Dennis M., Jelling, Denmark  
Using: AT Gold  
Find: Gold and diamond ring found near a 17th century castle once owned by King Christian the 4th of Denmark



Finder: Keith W., Yorkshire, United Kingdom  
Using: AT Pro International  
Find: Antonius Pius silver denarius from around 138 A.D.



Finder: Burdy A., Oslon, France  
Using: EuroACE  
Find: 22 silver French Medieval coins and two silver rings

Finder: Hapchina I., Bacau Romania  
Using: ACE 250  
Find: Approximately 2000-year-old hoard of Roman silver dinars



**GARRETT**  
**PRO-POINTER<sup>®</sup> AT**

## The Pro of **All Terrain** Pinpointing

More sensitive than our standard *Pro-Pointer II* and it is fully submersible!

Key to Features/Technology: see page 44

- **Fully waterproof to 10 feet** with orange color for added visibility underwater.
- **Maximum Sensitivity** for improved detection of nuggets and other small targets. Choose from three Sensitivity levels.
- **Fast Retune:** Quick button press instantly tunes out environment or narrows detection field for precise pinpointing of larger targets.
- **Lost Pro-Pointer Alarm:** After 5 minutes with no button presses, the pinpointer emits periodic warning chirps.
- **Automatic power off** after one hour of warning chirps; saves batteries.
- **Simple, single-button operation** for Power, Retune, Sensitivity adjustment, and Stealth Mode (vibrate only).
- **Patented Proportional Audio/Vibration**
- **Patented scraping blade for searching soil**

PN: 1140900  
MSRP: \$149.95

**Ruler in Inches and Centimeters** molded into side of pinpointer to judge target depth



Fast retune feature quickly tunes out mineralized ground, salt, and other challenging environments.



One-Touch<sup>™</sup>  
TREASURE HUNTING

### More Info:

- LED for low light uses.
- Includes woven belt holster and 9-volt battery.

Patents: US 7,575,065; D583,261 and patents pending.

**WATERPROOF TO 10 FEET!**





## NEW & IMPROVED!

Save time and find more targets with the pinpointer that is as valuable to a digger as a shovel!

## GARRETT<sup>®</sup> PRO-POINTER II<sup>®</sup>

Key to Features/Technology: see page 44



The *Pro-Pointer II* features a patented scraping blade for searching sand, soil or gravel.

PN: 1166050  
MSRP: \$129.95

- **Faster retuning capability**  
Fast on/off cycles allow user to quickly tune out the detection of saltwater, wet sand or highly mineralized ground.
- **Increased durability and sensitivity**
- **Lost pinpointer alarm** Emits warning chirps for 60 minutes if left on more than 5 minutes without a button press.
- **Auto-OFF feature** after one hour of warning chirps.
- **LED light for low light uses.**  
Twice to 6x the battery life of other pinpointers with LED lights.
- **Water resistant**  
Meets IEC 60529 IP 66 standards for water and dust protection (*see below*).
- **Belt Holster and 9V battery are included**

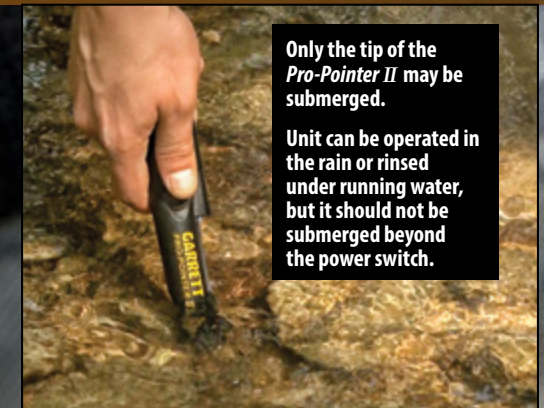


One-Touch<sup>™</sup>  
TREASURE HUNTING

- **Patented Proportional Audio/Vibration**  
Increases as pinpointer approaches target.

- **Pinpoint tip detection**  
(360° side scan detection)

- **Lanyard attachment loop** allows *Pro-Pointer II* to be attached to your belt, digging pouch or metal detector.



Only the tip of the *Pro-Pointer II* may be submerged.

Unit can be operated in the rain or rinsed under running water, but it should not be submerged beyond the power switch.



# GARRETT PINPOINTERS OVERVIEW, APPLICATIONS

## TECHNICAL SPECIFICATIONS: *PRO-Pointer AT* vs *PRO-Pointer II*

COMPARISON CHART	<b>GARRETT</b> <i>PRO-Pointer AT</i>	<b>GARRETT</b> <i>PRO-Pointer II</i>
Proportional audio/vibration pulse for target indication	✓	✓
Fully waterproof?	Yes, to 10 feet (3m). IP 68	No. Weatherproof, splashproof. (IP 66)
360° side scan detection plus pinpointing tip	✓	✓
Fast Retune (quick-press to shrink detection field)	✓	Use quick Power on/off retune method
Adjustable sensitivity	✓	No
Lost Pro-Pointer alarm	✓	✓
Automatic power off	✓	✓
Ruler with inch/cm markings	✓	No
Lanyard attachment loop	✓	✓
Automatic tuning at turn-on?	✓	✓
Patented scraping blade	✓	✓
LED light	✓	✓
Operating Temperatures	-35°F (-37°C) to 158°F (70°C)	-35°F (-37°C) to 158°F (70°C)
Total weight	6.5 oz. (0.2 kg) w/battery	6.5 oz. (0.2 kg) w/battery
Battery	9V (included)	9V (included)
Warranty	2 Year, Limited Parts/Labor	2 Year, Limited Parts/Labor
Web holster	Included	Included

### Advantages of Pinpointers

Garrett's *PRO-Pointers* are miniature metal detectors that enable you to recover detected targets faster.

- Speed your target recovery; more time to detect!
- Accurately find small items and prevent digging large holes.
- Identify multiple targets in close proximity.
- Search in tight areas or use as a utility pinpointer to locate nails and metal wall studs in homes or to locate rebar, conduit, etc.

### Retuning for Environment and Targets

Both of Garrett's *PRO-Pointers* are able to quickly tune out mineralized ground or saltwater. This retuning technique can also be used to narrow in on large targets and to help gauge a target's size/depth.

**To retune the standard *PRO-Pointer II*,** use a quick power off and on process to shrink the detection field. To tune out saltwater, wet sand or highly mineralized ground, hold the tip of the pinpointer to the water, sand or soil as you turn on the power—thus instantly adjusting the pinpointer to the environment.

**Retuning the *PRO-Pointer AT*** is even faster. Simply quick-press the button for an instant retune.

### Things to Know About Pinpointers:

- Garrett's *PRO-Pointers* operate in an All-Metal Mode, meaning they will react to both ferrous and non-ferrous targets.
- Turn off your pinpointer after every use. It is designed to tune itself to its environment each time it is turned on.





# VLF DETECTORS

Recommended for most hunting environments

## What's a VLF metal detector?

The most commonly-used metal detectors are Very Low Frequency (VLF) models, which continually transmit energy at a single powerful frequency, generally ranging between 3 kHz and 30 kHz.

## Advantages of VLF Detectors

Most soils you will search contain only light mineralization. In these environments, the single frequency of a VLF offers greater depth capabilities, enhanced Target ID, and better discrimination. VLF detectors are also very energy efficient and are less susceptible to external noise and interference.

In short, it is the most appropriate technology for detecting the broadest range of targets over the most common ground conditions.

## Things to Know About VLF Detectors:

- VLF metal detectors are also commonly referred to as Single-Frequency or Continuous Wave detectors.
- Saltwater environments and heavily mineralized soils can cause a loss of detection depth and Target ID accuracy. Pulse induction detectors are often favored here.
- Lower frequency detectors tend to be more sensitive to more highly conductive metals such as silver or brass. Higher frequencies are generally more sensitive to mid conductivity metals such as gold, platinum, and lead.

## VLF Tip: Ground Balance Feature

Soil mineralization levels often change in the field, and this can create unstable detector performance. Higher-end detector models with Ground Balance features allow the user to adjust the detector's ground balance as these conditions change. Ground balancing a detector calibrates it to the changing soil conditions, resulting in deeper target detection, more accurate target information, and quieter detector operation.





# ACE OVERVIEW AND APPLICATIONS

## ACE 150:

Light weight, powerful, entry-level detector that's easy to learn. Simple One-Touch operation; turn on and begin hunting!

**Ideal for:** Coins, jewelry, dry beach and fresh water wading. Can also be used for entry-level prospecting and relic hunting.

## ACE 250:

A powerful performer at a bargain price. The ACE 250, a worldwide best seller, has more modes and enhanced features to help find more treasure.

**Ideal for:** Coins, jewelry, relics, dry beach, fresh water wading and competition events. Can be used for entry-level prospecting or cache hunting.

## ACE 350:

The top of the ACE family, the 350 has advanced iron discrimination, a powerful DD coil, a higher frequency, and volume control headphones.

**Ideal for:** Coins, jewelry, relics, dry beach, fresh water wading, competition events, cache hunting, and it has improved features for prospecting.

### TECHNICAL SPECIFICATIONS: Garrett ACE Detectors

COMPARISON CHART	<b>ACE 150</b>	<b>ACE 250</b>	<b>ACE 350</b>
Target ID Cursor Segments	5	12	12
Iron Discrimination Segments	1	2	4
Notch Discrimination	Fixed	Adjustable	Adjustable
One-Touch Treasure Hunting	✓	✓	✓
Search Modes	3	5 (Plus Pinpoint)	5 (Plus Pinpoint)
Sensitivity/ Depth Adjustments	4	8	8
Electronic Pinpointing	No	✓	✓
Frequency	6.5 kHz	6.5 kHz	8.25 kHz
Audio Tone ID Levels	3	3	3
Graphic Target Analyzing	✓	✓	✓
Target Depth Indicator	✓	✓	✓
Battery Condition Indicator	✓	✓	✓
Standard Searchcoil	6.5" x 9" concentric <b>PROformance™</b>	6.5" x 9" concentric <b>PROformance™</b>	8.5" x 11" DD <b>PROformance™</b>
Volume Control Headphones	No	No	✓
Length (Adjustable)	42" to 51" (1.06m - 1.29m)	42" to 51" (1.06m - 1.29m)	42" to 51" (1.06m - 1.29m)
Total Weight	2.7 lbs (1.2 kgs)	2.7 lbs (1.2 kgs)	2.8 lbs (1.27 kgs)
Batteries	4 AA (included)	4 AA (included)	4 AA (included)
Warranty	2 Year, Limited Parts/Labor	2 Year, Limited Parts/Labor	2 Year, Limited Parts/Labor
What's in the Box?	Instructional DVD	Instructional DVD	Instructional DVD, Garrett® ClearSound Easy Stow Headphones





# ACE 150™

## Lightweight and Easy to Learn

Powerful, entry-level detector with One-Touch operation. Turn on and begin finding treasure!

See pg. 16 for interchangeable ACE series searchcoils.

- **Large LCD Screen**  
with easy-to-read Target ID Legend.
- **Light weight with big performance at a small price**
- **Three Search Modes**
- **Coin Depth Indicator**  
determines target depth.

Instructional DVD  
Included  
PN: 1678700

**More Info:** Low Battery Indicator: icon remains on when batteries become weak. Optional headphones with 1/4" size headphone jack. Can be disassembled into three pieces for storage/travel.

Key to Features/Technology: see page 44



One-Touch™  
TREASURE HUNTING

6.5" x 9" **PROformance™**  
concentric searchcoil  
included

# ACE 150™

PN: 1138070  
MSRP: \$179.95



garrett.com







## Big Features, Unbeatable Price

Excellent detection depth, rugged design, and easy to operate!

See pg. 16 for interchangeable ACE searchcoils.

- **Electronic Pinpointing**

Precisely locates targets and speeds recovery.

- **Notch Discrimination**

Modify discrimination patterns for what you seek.

- **Five Search Modes**

- **Expanded Target ID Legend**

Easy-to-read above large LCD screen.

**More Info:** Low Battery Indicator: icon remains on when batteries become weak. Adjustable armcuff. Optional headphones with 1/4" size headphone jack. Can be disassembled into three pieces for storage/travel.

Key to Features/Technology: see page 44

One-Touch™  
TREASURE HUNTING



(Left) Shelly H. of Nebo, IL with her 1927 Peace Dollar find.





**SO POWERFUL,  
SO AFFORDABLE,  
SO LEADER OF ITS CLASS**

**ACE  
250™**

PN: 1139070  
MSRP: \$249.95



6.5" x 9" **PROformance™**  
concentric searchcoil included

**Instructional DVD Included**  
PN: 1678700



[garrett.com](http://garrett.com) 



# ACE 350™

## All Purpose Versatility

Powerful DD searchcoil, enhanced discrimination offers improved ability to separate good targets from trash.

See pg. 16 for interchangeable ACE searchcoils.

- **Enhanced Iron Discrimination**

Allows for more control of iron discrimination levels; helps separate good targets from adjacent junk iron.

- **Powerful DD searchcoil**

Provides greater detection depth and performance in mineralized grounds and excellent scanning coverage.

- **Higher Frequency**

Offers improved ability to detect low- and mid-conductivity items (i.e. gold nuggets, jewelry, lead relics).

- **Notch Discrimination**

Modify your discrimination patterns to help find only what you are looking for.

- **Continuous Depth Indicator**

Helps determine depth of target that has been detected.

**More Info:**

Battery Condition Indicator shows battery life. Graphic Target Analyzer identifies target's conductivity. Detector can be disassembled into three pieces for storage/travel.

Key to Features/Technology: see page 44

One-Touch™  
TREASURE HUNTING

GTA™



ENHANCED  
iron



Brian T. of Gulfport, FL shares his ACE 350 finds with Garrett after only having it for a few months.







This Civil War sword belt plate was found with an ACE 350 by Josh H. of Simpsonville, KY.

## GO WITH CONFIDENCE WITH THE “KING” OF ACES.

**ACE**  
**350**

PN: 1140260  
MSRP: \$349.95



8.5" x 11" **PROformance™**  
DD searchcoil included



*In-Line Volume Control  
Headphones included*  
PN: 1612700

*Instructional DVD Included*  
PN: 1679700



garrett.com





# ACE ACCESSORIES

These items are made specifically for *ACE* series detectors. For other bags, packs, recovery tools, and accessories, see pages 41–43.

## SEARCHCOILS



**9" x 12" PROformance concentric searchcoil**  
PN: 2221900 \$99.95



**6.5" x 9" PROformance concentric searchcoil**  
(standard on ACE 250 and ACE 150)  
PN: 2221700 \$89.95



**8.5" x 11" PROformance DD searchcoil**  
(standard on ACE 350)  
PN: 2222000 \$139.95



**5" x 8" PROformance DD searchcoil**  
PN: 2223000 \$129.95



**4.5" ACE Super Sniper searchcoil**  
PN: 2221800 \$84.95

## OPTIONAL STEM ASSEMBLIES



**Black Middle Stem with Camlocks**  
PN: 2347500 \$17.50



**Junior Stem Kit Assembly** This shorter stem set is easily installed to make your *ACE* a better fit for a child. Includes mounting hardware.  
PN: 2235100 \$19.95

## PROTECTIVE COVER-UP

Our *ACE* cover-up is easily installed to protect your metal detector from the weather and dirt.  
PN: 1619900 \$14.95



left view



front view

## DUFFLE/TOTE BAG

Store your *ACE* detector and its accessories in this handy duffle bag. Approximately 23" length with shoulder strap and carrying handles.



**ACE Sport Tote Bag**  
PN: 1651500 \$14.95

**Searchcoil Tip:** The *Super Sniper* searchcoil is an ideal optional accessory for any detector if you plan to search for targets in tight areas—such as among roots, rocks or even under playground equipment.





# NO BOUNDARIES

Weatherproof. Rainproof.

Waterproof to 10 feet.

What did you expect with "All-Terrain" in the name?







## Bring Hunted-Out Sites Back to Life:

Impressive recovery speed, target separation and detection depth!

See pg. 23 for interchangeable AT Pro searchcoils.

- **Pro Mode Audio**

Proportional Audio and Tone Roll feature allows user to hear subtle changes in target's response to better judge conductivity, size, shape and depth.

- **High Res Iron Discrimination™**

Allows user to set iron discrim to one of 40 levels for precise ability to separate good targets from trash.

- **Iron Audio™**

Allows the user to hear discriminated iron and to alter the detector's mid-tone signal's range.

- **All Terrain Versatility**

Weatherproof housing designed for dusty, humid, or wet environments; unit can be submerged to a maximum 10-foot depth.

- **Fast Recovery Speed**

Allows greater ability to pick out good targets amongst trash.

**More Info:** Continuous coin depth indicator to determine target depth. Battery condition indicator shows battery life. Graphic Target Analyzer identifies target's conductivity.

Key to Features/Technology: see page 44







## READY FOR ALL TERRAIN— WATERPROOF TO 10 FEET

**AT<sup>PRO</sup>**

PN: 1140460  
MSRP: \$699.95



8.5" x 11" **PROformance™**  
DD searchcoil included



*Land headphones included*  
PN: 2202400

*Instructional DVD Included*  
PN: 1679500







## All Terrain, All Treasure

Ideal for gold nuggets, coins, relics, caches and jewelry in every terrain, even in fresh water to ten feet.

See pg. 23 for interchangeable AT Gold searchcoils.

- **True All-Metal, Motion Deepseeking Mode**

Provides deepest detection and sensitivity in mineralized soils.

- **All-Metal Iron Audio™**

**Garrett Exclusive** feature that audibly identifies iron while operating in a True All-Metal Mode (also available in the two Discrim Modes).

- **Ground Balance Window**

**Garrett Exclusive** feature that allows user to “spread” the ground balance setting to reduce the response to subtle ground variations.

- **Pro Mode Audio**

Proportional Audio and Tone Roll feature allows user to hear subtle changes in target’s response to better judge its conductivity, size, shape and depth.

- **Ground Balance**

Automatic and manually adjustable for improved performance.

- **Adjustable Threshold**

User can manually adjust the audio threshold (the constant background sound) to better hear targets.

- **Fast Recovery Speed**

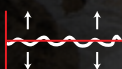
Allows greater ability to pick out good targets amongst trash.

- **Search Modes**

All-Metal, Discrim 1, Discrim 2, plus electronic Pinpointing

**More Info:** Continuous Coin Depth Indicator to determine target depth. Battery Condition Indicator shows battery life. Graphic Target Analyzer identifies target’s conductivity.

Key to Features/Technology: see page 44



Below, left-right: AT Gold finds made by Garrett customers Luke A., Ryan L., and Steve S.







# IT'S HOT ON GOLD NUGGETS, RELICS, COINS, AND MUCH MORE!

**AT<sup>™</sup>**<sub>GOLD</sub>

PN: 1140680  
MSRP: \$799.95



5' x 8' **PROformance™**  
DD searchcoil included



*Land headphones included*  
PN: 2202400

*Instructional DVD Included*  
PN: 1679600





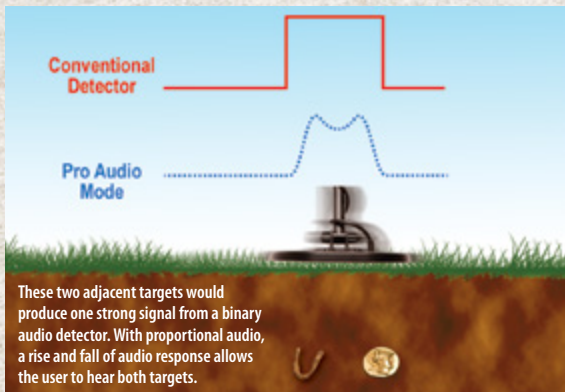
# AT GOLD & AT PRO TECHNOLOGY, FEATURES

## PROPORTIONAL AUDIO FEATURE



The *AT Gold* and *AT Pro* feature advanced, proportional (Pro) audio modes. This allows the user to hear subtle changes in a target's response. Proportional audio also helps the user to better judge a target's size, shape and depth and has the additional benefit of a much faster recovery time when detecting adjacent targets.

The *AT Pro* also includes three Standard audio modes, which provide a full-strength beep regardless of a target's amplitude. Many detectorists prefer this simpler, binary (either on or off) target response.

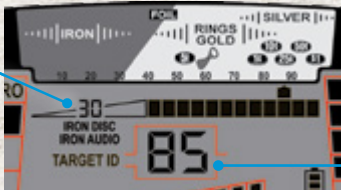


## HIGH-RES IRON DISCRIMINATION™



With adjustable levels of iron discrimination (40 points on the *AT Pro* and 44 points on the *AT Gold*), the user can apply only the minimal amount of discrim needed to reject iron trash targets. The detector will continue to find desirable targets that might otherwise have been "masked" by iron.

High-Res Iron Discrim setting



Digital Target ID number corresponds with Upper Scale conductivity pixel.

## DIGITAL TARGET ID (0 TO 99 SCALE)



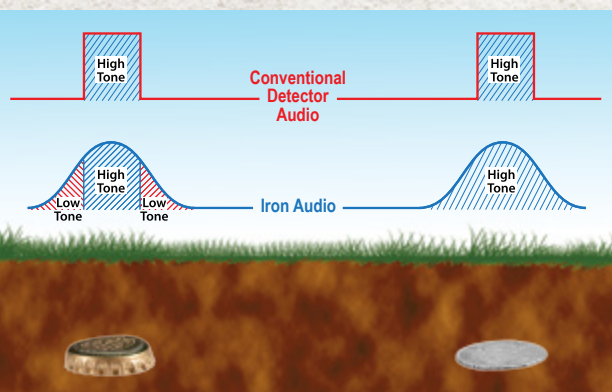
This scale on the LCD screen helps to more precisely identify buried targets. Items with a value near 1 are the most ferrous, while the most conductive targets (such as thick silver) register closer to 99 on the Digital Target ID.

## IRON AUDIO™ AND ALL-METAL IRON AUDIO



Iron objects can mask good targets or create "ghost signals" that appear to be good. Garrett's selectable Iron Audio feature allows the user to hear discriminated iron (normally silenced) to help avoid being tricked into digging an undesired target.

For many detectors, bottle caps, steel washers, etc. sound like good targets, producing a high tone response. The bottle cap's shape and flat surface resembles a coin, which tricks the detector. With Iron Audio however, the bottle cap will produce a very distinctive response with multiple tones, compared with a coin's high-tone response.



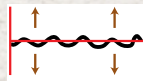
The *AT Gold* also features All-Metal Iron Audio to identify problematic iron targets while in a True All-Metal Mode, a Garrett exclusive!

## tone roll audio™

Provides more audible target information to help identify targets, particularly iron. Detectors with binary audio produce a single target tone based on the target's strongest signal. Tone Roll audio provides a variance of target tones as the searchcoil approaches, passes above and departs from a target. These varying phases provide better overall target information.

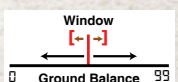
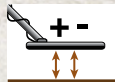


## ADJUSTABLE THRESHOLD



This *AT Gold* feature allows the user to select 33 levels of constant background audio ("hum"). By operating with a barely audible threshold level, this feature helps to maximize the user's ability to hear faint signals thereby maximizing detection depth.

## GROUND BALANCE OPTIONS



The *AT Gold* and *AT Pro* both offer manual and automatic ground balance features to allow the user to reduce the detrimental effects of ground mineralization. The *AT Gold* additionally offers Ground Balance Window, a Garrett exclusive feature. This setting allows the user to simultaneously ground balance to a range of values. This smooths out the All Metal Audio by reducing the subtle ground responses and allows the user to better hear faint target signals.

## ALL-TERRAIN VERSATILITY

Garrett *AT* detectors are engineered with waterproof housings and connectors to protect in dusty, muddy, wet and humid environments. They can be submerged to a 10-foot depth (maximum).

*Note:* Waterproof headphones must be used if the headphones are submerged in water. The standard headphones provided with the *AT Pro* and the *AT Gold* cannot be submerged, however the cord leading to the headset is submersible.





**AT Gold:** Offers deeper detection on tiny gold nuggets, relics, and small jewelry. Includes advanced ground balance and iron ID features.

**Ideal for:** Highly mineralized ground and challenging prospecting terrains. Recommended for freshwater hunting.

**AT Pro:** Choose from easy-to-learn Standard Modes or advanced Pro Modes for more target information and depth.

**Ideal for:** Coins, jewelry, relics, and gold. This all-terrain detector can be submerged in either saltwater or fresh water.

#### TECHNICAL SPECIFICATIONS: AT GOLD vs AT PRO

COMPARISON CHART	AT GOLD	AT PRO
Target ID Cursor Segments	20	20
Iron Discrimination Segments	44	40
True All-Metal Mode	✓	No
Notch Discrimination	Preset (fixed)	Adjustable
Search Modes	3	6 (3 Standard, 3 Pro)
Proportional Audio	✓	✓
Tone Roll Audio™	✓	✓
Standard Binary Audio	No	✓
Fast Recovery Speed	✓	✓
Sensitivity/ Depth Adjustments	8	8
Iron Audio™ (Disc. Modes)	✓	✓
Iron Audio™ (All Metal)	✓	No
Threshold Adjustment	✓	No
Digital Target ID	✓	✓
Ground Balance, Auto/Manual	✓	✓
Ground Balance Window™	✓	No
Electronic Pinpointing	✓	✓
Waterproof to 10 feet (3m)	✓	✓
• Freshwater use	✓	✓
• Saltwater use	not suggested	✓
Frequency	18 kHz, adjustable	15 kHz, adjustable
Audio Tone ID Levels	3	3
Target Depth Indicator	✓	✓
Standard Searchcoil	5" x 8" DD PROformance™	8.5" x 11" DD PROformance™
Length (Adjustable)	43" to 56" (1.09m - 1.4m)	43" to 56" (1.09m - 1.4m)
Total Weight	2.8 lbs (1.27 kgs)	3.03 lbs (1.4 kgs)
Batteries	4 AA (included)	4 AA (included)
Battery Condition Indicator	✓	✓
Warranty	2 Year, Limited Parts/Labor	2 Year, Limited Parts/Labor
What's in the Box?	Instructional DVD, Land Use Headphones	Instructional DVD, Land Use Headphones

## AT COMPARISON and AT ACCESSORIES

### SEARCHCOILS



**9" x 12" PROformance concentric searchcoil**  
PN: 2222700 \$139.95



**6.5" x 9" PROformance concentric searchcoil**  
PN: 2222600 \$119.95



**8.5" x 11" PROformance™ DD searchcoil**  
(Standard on AT Pro)  
PN: 2222400 \$159.95



**5" x 8" PROformance™ DD searchcoil**  
(Standard on AT Gold)  
PN: 2222800 \$149.95



**4.5" AT SuperSniper™ searchcoil**  
PN: 2222500 \$109.95

### AT CAPS



**AT Pro Camo Cap**  
PN: 1633400



**AT Gold Camo Cap**  
PN: 1664100



# GTI 2500

## See a Target's Size and Depth!

Spend less time digging trash and more time digging treasure.

See pg. 26 for interchangeable GTI searchcoils.

- **Graphic Target Imaging™ (GTI)**  
Shows true target size and depth.
- **Graphic Target Analyzer™ (GTA)**  
Identifies target's conductivity.
- **All Metal, Non-Motion Deepseeking Mode**  
Provides greatest detection depth.
- **True Digital Signal Processor**  
Improves Discrimination accuracy.
- **ScanTrack™**  
Optimizes treasure signals based on searchcoil swing speed.
- **Backlight**  
Illuminates LCD screen for improved visibility.
- **Ground Balance**  
Automatic and Manually Adjustable. Also: FastTrack™ Ground Balance, for use in All-Metal Mode.
- **Automatic Ground Tracking**  
Detector automatically adjusts itself to ground mineralization for optimum performance.
- **Salt Elimination Aid**  
Eliminate inference caused by wetted salt sand at beach.
- **Surface Elimination**  
Adjustable search aid helps ignore shallow items.
- **Last Mode Switching**  
Switch from All-Metal into last-used Discrim Mode to quickly check a target.
- **Hip Mount Battery Pack**  
Reduces detector weight for long searches.
- **User Adjustable Controls**  
Threshold, Volume, Tone, Sensitivity, and Discrimination
- **6 Search Modes (Discrim Patterns)**  
All-Metal, Zero, Jewelry, Custom, Relics, Coins, plus electronic Pinpointing

Key to Features/Technology: see page 44



Hoard of 4th century Roman silver coins found by Ovidiu P. of Romania with his GTI 2500.

